

Regulatory Affairs

**Kryxana<sup>®</sup> (ribociclib)**  
200 mg Film-coated tablets

**International Package Leaflet (IPL)**

CDS Version 3.0

IPL Effective date: 11-Apr-2023

Safety Label  
Change (SLC) N/A  
Tracking Number:

Document status: Final

Property of Novartis  
Confidential  
May not be used, divulged, published or otherwise disclosed  
without the consent of Novartis

## **KRYXANA®**

Pharmacotherapeutic group: Antineoplastic agents, protein kinase inhibitors, ATC code: L01XE42

## **DESCRIPTION AND COMPOSITION**

### **Pharmaceutical form**

#### **Film-coated tablet 200 mg**

Light greyish violet, unscored, round, curved with beveled edges, debossed with “RIC” on one side and “NVR” on the other side.

### **Active substance**

Each tablet contains 200 mg of ribociclib as the succinate salt.

### **Excipients**

Tablet core: Microcrystalline cellulose; low-substituted hydroxypropylcellulose; crospovidone (Type A); colloidal silicon dioxide; magnesium stearate.

Coating material: Polyvinyl alcohol (partially hydrolyzed); titanium dioxide (E171); iron oxide black (E172); iron oxide red (E172); talc; lecithin (soy) (E322); xanthan gum.

## **INDICATIONS**

Kryxana is (a cyclin-dependent kinase inhibitor, CDKi) indicated for the treatment of patients with hormone receptor (HR)-positive, human epidermal growth factor receptor 2 (HER2)-negative (locally) advanced or metastatic breast cancer in combination with an aromatase inhibitor or fulvestrant.

In pre- or perimenopausal women, or men, the endocrine therapy should be combined with a luteinizing hormone-releasing hormone (LHRH) agonist.

## **DOSAGE REGIMEN AND ADMINISTRATION**

Treatment with Kryxana should be initiated by a physician experienced in the use of anticancer therapies.

### **Dosage regimen**

#### **General target population**

The recommended dose of Kryxana is 600 mg (3 x 200 mg film-coated tablets) taken orally, once daily for 21 consecutive days followed by 7 days off treatment resulting in a complete cycle of 28 days. Kryxana can be taken with or without food (see section INTERACTIONS).

When co-administered with Kryxana, the recommended dose of letrozole is 2.5 mg, taken once daily throughout the 28-day cycle. Refer to the full prescribing information of letrozole.

For dosing and administration with the aromatase inhibitor, refer to the applicable full prescribing information.

Patients should take their dose of Kryxana and letrozole or the aromatase inhibitor at approximately the same time each day, preferably in the morning.

When co-administered with Kryxana, the recommended dose of fulvestrant is 500 mg administered intramuscularly on days 1, 15 and 29, and once monthly thereafter. Please refer to full prescribing information of fulvestrant.

Treatment of pre- or peri-menopausal women or men, with Kryxana should include co-administration of an LHRH agonist according to local clinical practice standards.

### Dose modifications

Management of severe or intolerable adverse drug reactions (ADRs) may require temporary dose interruption/reduction or discontinuation of Kryxana. If dose reduction is required, the recommended dose reduction guidelines for adverse drug reactions (ADRs) are listed in Table 1.

**Table 1 Dose modification guidelines for adverse drug reactions**

Kryxana		
	Dose	Number of Tablets
Starting dose	600 mg/day	3 × 200 mg tablets
First dose reduction	400 mg/day	2 × 200 mg tablets
Second dose reduction	200 mg/day*	1 × 200 mg tablet

*\*If further dose reduction below 200 mg/day is required, discontinue the treatment.*

Tables 2, 3, 4, 5 and 6 summarize recommendations for dose interruption, reduction, or discontinuation of Kryxana in the management of specific adverse events. Clinical judgment of the treating physician should guide the management plan of each patient based on individual benefit/risk assessment (see sections WARNINGS AND PRECAUTIONS, ADVERSE DRUG REACTIONS).

**Table 2 Dose modification and management for neutropenia**

Neutropenia	Grade 1 or 2 (ANC 1,000/mm <sup>3</sup> - <LLN)	Grade 3 (ANC 500 - <1,000/mm <sup>3</sup> )	Grade 3 febrile* neutropenia	Grade 4 (ANC <500/mm <sup>3</sup> )
	No dose adjustment is required.	Interrupt Kryxana until recovery to Grade ≤2.  Resume Kryxana at the same dose level.  If toxicity recurs at Grade 3, interrupt Kryxana dose until recovery to Grade ≤2, then resume Kryxana at the next lower dose level.	Interrupt Kryxana until recovery of neutropenia to Grade ≤2. Resume Kryxana at the next lower dose level.	Interrupt Kryxana until recovery to Grade ≤2.  Resume Kryxana at the next lower dose level.
Perform Complete Blood Counts (CBC) before initiating treatment with Kryxana.  After initiating treatment with Kryxana, monitor CBC every 2 weeks for the first 2 cycles, at the beginning of each of the subsequent 4 cycles, then as clinically indicated.				
*Grade 3 neutropenia with a single episode of fever >38.3°C or a sustained temperature above 38°C for more than one hour and/or concurrent infection. Grading according to CTCAE Version 4.03 CTCAE=Common Terminology Criteria for Adverse Events.				

**Table 3 Dose modification and management for hepatobiliary toxicity**

AST and/or ALT elevations from baseline*, without increase in total bilirubin above 2 x ULN	Grade 1 (>ULN - 3 x ULN)	Grade 2 (>3 to 5 x ULN)	Grade 3 (>5 to 20 x ULN)	Grade 4 (>20 x ULN)
	No dose adjustment is required.	Baseline at <Grade 2: Interrupt Kryxana until recovery to ≤baseline Grade, then resume Kryxana at same dose level. If Grade 2 recurs, resume Kryxana at next lower dose level.  ----- Baseline at Grade 2: No dose interruption.	Interrupt Kryxana until recovery to ≤baseline Grade, then resume at next lower dose level.  If Grade 3 recurs, discontinue Kryxana.	Discontinue Kryxana
<b>Combined elevations in AST and/or ALT together with total bilirubin increase, in the absence of cholestasis</b>	If patients develop ALT and/or AST >3 x ULN along with total bilirubin >2 x ULN irrespective of baseline Grade, discontinue Kryxana.			
Perform Liver Function Tests (LFTs) before initiating treatment with Kryxana.				
After initiating treatment with Kryxana, monitor LFTs every 2 weeks for the first 2 cycles, at the beginning of each of the subsequent 4 cycles, then as clinically indicated.				
If Grade ≥2 abnormalities are observed, more frequent monitoring is recommended.				
*Baseline = prior to treatment initiation. Grading according to CTCAE Version 4.03 CTCAE=Common Terminology Criteria for Adverse Events.				

**Table 4 Dose modification and management for QT prolongation**

<b>ECGs with QTcF &gt;480 ms</b>	<ol style="list-style-type: none"> <li>1. Interrupt the Kryxana dose;</li> <li>2. If QTcF interval prolongation resolves to &lt;481 ms, resume Kryxana at the next lower dose level;</li> <li>3. If QTcF interval ≥481 ms recurs, interrupt the Kryxana dose until QTcF interval resolves to &lt;481 ms; and then resume Kryxana at next lower dose level</li> </ol>
<b>ECGs with QTcF &gt;500 ms</b>	<p>If QTcF interval greater than 500 ms: Interrupt Kryxana until QTcF interval reaches &lt;481 ms then resume Kryxana at next lower dose level.</p> <p>If QTcF interval is greater than 500 ms or shows a greater than 60 ms change from baseline in combination with Torsade de Pointes or polymorphic ventricular tachycardia or signs/symptoms of serious arrhythmia, permanently discontinue Kryxana.</p>
Assess ECG prior to initiation of treatment.	
After initiating treatment with Kryxana, repeat ECG at approximately day 14 of the first cycle and at the beginning of the second cycle, then as clinically indicated.	
In case of QTcF interval prolongation during treatment, more frequent ECG monitoring is recommended.	

**Table 5 Dose modification and management for ILD/Pneumonitis**

ILD/pneumonitis	Grade 1 (asymptomatic)	Grade 2 (symptomatic)	Grade 3 or 4 (severe)
	No dose adjustment is required. Initiate appropriate	Interrupt Kryxana until recovery to Grade ≤1,	Discontinue Kryxana

	medical therapy and monitor as clinically indicated.	then resume Kryxana at the next lower dose level*.	
--	--	--	--

Grading according to CTCAE Version 4.03.

\* An individualized benefit-risk assessment should be performed when considering resuming Kryxana

ILD = Interstitial Lung Disease

**Table 6 Dose modification and management for other toxicities\***

Other toxicities	Grade 1 or 2	Grade 3	Grade 4
	No dose adjustment is required. Initiate appropriate medical therapy and monitor as clinically indicated.	Interrupt Kryxana dose until recovery to Grade $\leq 1$ , then resume Kryxana at the same dose level.  If Grade 3 recurs, resume Kryxana at the next lower dose level.	Discontinue Kryxana.
*Excluding neutropenia, hepatobiliary toxicity, QT interval prolongation and ILD/Pneumonitis. Grading according to CTCAE Version 4.03. CTCAE=Common Terminology Criteria for Adverse Events.			

### Dose modification for use of Kryxana with strong CYP3A inhibitors

Concomitant use of Kryxana should be avoided with strong CYP3A inhibitors and an alternative concomitant medication should be considered with low potential for CYP3A inhibition. If a strong CYP3A inhibitor must be co-administered, the Kryxana dose should be reduced to 400 mg once daily. If the strong inhibitor is discontinued, the Kryxana dose should be changed (after at least 5 elimination half-lives of the strong CYP3A inhibitor) to the dose used prior to the initiation of the strong CYP3A inhibitor (see sections WARNINGS AND PRECAUTIONS, INTERACTIONS AND CLINICAL PHARMACOLOGY).

### Special populationsRenal impairment

Based on population pharmacokinetic analysis and data from cancer patients in clinical trials, no dose adjustment is necessary in patients with mild or moderate renal impairment (see section CLINICAL PHARMACOLOGY).

Based on a renal impairment study in healthy subjects and non-cancer subjects with severe renal impairment, a starting dose of 200 mg is recommended. Kryxana has not been studied in breast cancer patients with severe renal impairment (see section CLINICAL PHARMACOLOGY).

### Hepatic impairment

Based on a hepatic impairment study in healthy subjects and non-cancer subjects with impaired hepatic function, no dose adjustment is necessary in patients with mild hepatic impairment (Child-Pugh class A). A dose adjustment is required in patients with moderate (Child-Pugh class B) and severe hepatic impairment (Child-Pugh class C) and the starting dose of 400 mg is recommended. Kryxana has not been studied in breast cancer patients with moderate and severe hepatic impairment (see section CLINICAL PHARMACOLOGY).

Review the full prescribing information for the aromatase inhibitor, fulvestrant or the LHRH agonist for dose modifications related to hepatic impairment.

### **Pediatric patients**

There are limited data in pediatric patients and the safety and efficacy of Kryxana in this population have not been established.

### **Geriatric patients (65 years of age or older)**

No dose adjustment is required in patients over 65 years of age (see section CLINICAL PHARMACOLOGY).

### **Method of administration**

Kryxana should be taken orally once daily at the same time every day, preferably in the morning, with or without food. If the patient vomits after taking the dose or misses a dose, an additional dose should not be taken that day. The next prescribed dose should be taken at the usual time. Kryxana tablets should be swallowed whole (tablets should not be chewed, crushed or split prior to swallowing). Tablets that are broken, cracked, or otherwise not intact should not be ingested.

## **CONTRAINDICATIONS**

Kryxana is contraindicated in patients with hypersensitivity to the active substance, or to any of the excipients.

## **WARNINGS AND PRECAUTIONS**

### **Neutropenia**

In the 3 phase III clinical studies (MONALEESA-2 (A2301), MONALEESA-7 (E2301-NSAI) and MONALEESA-3 (F2301)), neutropenia was the most frequently reported adverse drug reaction (75.4%) and a Grade 3 or 4 decrease in neutrophil counts (based on laboratory findings) was reported in 62.0% of patients receiving Kryxana plus any combination in the phase III clinical studies.

Among the patients who had Grade 2, 3 or 4 neutropenia in the phase III clinical studies, the median time to Grade 2, 3 or 4 neutropenia was 17 days. The median time to resolution of Grade  $\geq 3$  (to normalization or Grade  $<3$ ) was 12 days in the Kryxana plus any combination treatment group. Severity of neutropenia is concentration dependent. Febrile neutropenia was reported in 1.7% of patients exposed to Kryxana in the phase III clinical studies. Physicians should inform patients to promptly report any fever (see section ADVERSE DRUG REACTIONS).

A complete blood count (CBC) should be performed before initiating therapy with Kryxana. CBC should be monitored every 2 weeks for the first 2 cycles, at the beginning of each of the subsequent 4 cycles then as clinically indicated.

Based on the severity of the neutropenia, Kryxana may require dose interruption/reduction or discontinuation as described in Table 2 (see section DOSAGE REGIMEN AND ADMINISTRATION).

### **Hepatobiliary toxicity**

In the phase III clinical studies, increases in transaminases were observed.

Grade 3 or 4 increases in ALT (11.2% vs. 1.7%) and AST (7.8% vs. 2.1%) were reported in the Kryxana plus any combination and placebo plus any combination arms, respectively. Grade 4

increases in ALT (2.0% vs. 2.0%) and AST (1.1% vs. 0.1%) were reported in the Kryxana plus any combination treatment and placebo plus any combination treatment arms respectively.

In the phase III clinical studies, 70.9% (90/127) of Grade 3 or 4 ALT or AST elevation events occurred within the first 6 months of treatment (see section ADVERSE DRUG REACTIONS). The majority of increases in ALT and AST were reported without concurrent elevations of bilirubin. Among the patients who had Grade 3 or 4 ALT/AST elevation, the median time-to-onset was 92 days for the Kryxana plus any combination treatment group. The median time to resolution (to normalization or Grade  $\leq 2$ ) was 21 days in the Kryxana plus any combination treatment group.

Concurrent elevations of ALT or AST  $>3$  x ULN and of total bilirubin  $>2$  x ULN, with normal alkaline phosphatase levels and in the absence of cholestasis, occurred in 6 patients (4 patients in Study A2301, whose levels recovered to normal within 154 days; and 2 patients in Study F2301, whose levels recovered to normal within 121 and 532 days, respectively, after discontinuation of Kryxana. There were no such cases reported in Study E2301).

LFTs should be performed before initiating therapy with Kryxana. The LFTs should be monitored every 2 weeks for first 2 cycles, at the beginning of each of the subsequent 4 cycles, then as clinically indicated.

Based on the severity of the transaminase elevations, Kryxana may require dose interruption, reduction, or discontinuation as described in Table 3 (see section DOSAGE REGIMEN AND ADMINISTRATION). Recommendations for patients who have elevated AST/ALT Grade  $\geq 3$  at baseline have not been established.

### **QT interval prolongation**

In the phase III clinical studies, in patients with advanced or metastatic breast cancer who received Kryxana plus any combination partners, review of ECG data showed that 15 patients (1.4%) had  $>500$  ms post-baseline QTcF interval value, and 61 patients (5.8%) had a  $>60$  ms QTcF interval increase from baseline. There were no reported cases of Torsade de Pointes.

In E2301 (MONALEESA-7), the observed mean QTcF interval increase from baseline was approximately more than 10 ms higher in the tamoxifen plus placebo sub-group compared with NSAI plus placebo sub-group, suggesting that tamoxifen had a QTcF interval prolongation effect which can contribute to the QTcF interval observed in the Kryxana plus tamoxifen group (see section CLINICAL PHARMACOLOGY- Cardiac electrophysiology). In the placebo arm, an increase of  $>60$  ms from baseline occurred in 6/90 (6.7%) of patients receiving tamoxifen and in no patients receiving an NSAI. An increase of  $>60$  ms from baseline in the QTcF interval was observed in 14/87 (16.1%) of patients receiving Kryxana plus tamoxifen and in 18/245 (7.3%) of patients receiving ribociclib plus an NSAI.

An ECG should be assessed prior to initiation of treatment. Treatment with Kryxana should be initiated only in patients with QTcF interval values less than 450 ms. The ECG should be repeated at approximately Day 14 of the first cycle, at the beginning of the second cycle and then as clinically indicated.

Appropriate monitoring of serum electrolytes (including potassium, calcium, phosphorous and magnesium) should be performed prior to initiation of treatment, at the beginning of the first 6 cycles and then as clinically indicated. Any abnormality should be corrected before and during Kryxana therapy.

Kryxana should be avoided in patients who already have or who are at significant risk of developing QTc interval prolongation. This includes patients with:

- Long QT syndrome.
- Uncontrolled or significant cardiac disease including recent myocardial infarction, congestive heart failure, unstable angina and bradyarrhythmia.
- Electrolyte abnormalities.

Kryxana should be avoided in combination with medicinal products known to prolong the QTc interval and/or strong CYP3A inhibitors as this may lead to clinically meaningful prolongation of the QTcF interval (see sections DOSAGE REGIMEN AND ADMINISTRATION, INTERACTIONS and CLINICAL PHARMACOLOGY). Based on the findings in MONALEESA-7 (E2301), Kryxana is not recommended for use in combination with tamoxifen (see section CLINICAL STUDIES).

Based on the observed QT prolongation during treatment, Kryxana may require dose interruption, reduction or discontinuation as described in Table 4 (see sections DOSAGE REGIMEN AND ADMINISTRATION, ADVERSE DRUG REACTIONS and CLINICAL PHARMACOLOGY).

### **Reproductive toxicity**

Based on animal findings and its mechanism of action, Kryxana can cause fetal harm when administered to a pregnant woman. Women of reproductive potential should be advised to use effective contraception during therapy with Kryxana and for at least 21 days after the last dose (see section PREGNANCY, LACTATION, FEMALES AND MALES OF REPRODUCTIVE POTENTIAL).

### **Severe cutaneous reactions**

Toxic epidermal necrolysis (TEN) has been reported with Kryxana treatment. If signs and symptoms suggestive of severe cutaneous reactions (e.g., progressive widespread skin rash often with blisters or mucosal lesions) appear, Kryxana should be immediately and permanently discontinued.

### **Interstitial Lung Disease (ILD)/Pneumonitis**

ILD/pneumonitis has been reported with CDK4/6 inhibitors including reports of fatal cases .

In the three phase III clinical studies (MONALEESA-2 (A2301), MONALEESA-7 (E2301-NSAI) and MONALEESA-3 (F2301)), ILD (any grade 0.3%, including 0.1% grade 3) was reported in the Kryxana treated group, with no cases in the placebo treated group. Pneumonitis (any grade 0.6%, vs 0.4%) was reported in the Kryxana and placebo treated groups, respectively, with no grade 3/4 events in either treatment group. Additional cases of ILD/pneumonitis have been observed with Kryxana in the post-marketing setting (see section ADVERSE DRUG REACTIONS).

Based on the severity of the ILD/pneumonitis patients may require treatment interruption, dose reduction or permanent discontinuation as described in Table 5 (see section DOSAGE REGIMEN AND ADMINISTRATION).

Patients should be monitored for pulmonary symptoms indicative of ILD/pneumonitis which may include hypoxia, cough, and dyspnea.



## ADVERSE DRUG REACTIONS

### Summary of the safety profile

The overall safety profile of Kryxana reported below is based on the pooled data set of 1065 patients who received Kryxana in combination with endocrine therapy (N=582 in combination with an aromatase inhibitor and N=483 in combination with fulvestrant) in double-blind, placebo-controlled phase III clinical studies (MONALEESA-2, MONALEESA-7-NSAI arm, MONALEESA-3) in HR-positive, HER2-negative advanced or metastatic breast cancer. The median duration of exposure to study treatment across the pooled phase III studies data set was 19.2 months with 61.7% patients exposed for  $\geq 12$  months.

Dose reductions due to adverse events (AEs), regardless of causality occurred in 39.5% of patients receiving Kryxana in phase III clinical studies regardless of the combination and in 4.3% of patients receiving placebo.

Permanent discontinuations due to adverse events were reported in 8.7% of patients receiving Kryxana plus any combination and in 3.1% of patients receiving placebo plus any combination.

The most common AEs leading to permanent discontinuation of Kryxana with any combination treatment partner were ALT increased (4.5%), AST increased (2.5%) and vomiting (1.1%).

In the pooled analysis of three phase III studies, on treatment deaths were reported in 22 patients (2.1%) treated with Kryxana plus any combination vs 16 patients (2.0%) treated with placebo plus any combination treatment. Excluding the most frequent cause of death disease progression, three treatment related causes of deaths were reported in patients treated with Kryxana plus any combination treatment. Causes of death were acute respiratory distress syndrome 1 (0.1%), acute respiratory failure 2 (0.2%), and sudden death (in a patient who had Grade 3 hypokalaemia and Grade 2 QT prolongation that improved to Grade 1 on the same day, both reported 10 days before the event) 1 (0.1%).

The most common ADRs across the pooled phase III studies (reported at a frequency of  $\geq 20\%$  and exceeding the frequency for placebo) were neutropenia, infections, nausea, fatigue, diarrhoea, leukopenia, vomiting, headache, constipation, alopecia, cough, rash, back pain, anaemia and abnormal liver function tests.

The most common Grade 3/4 ADRs in the pooled data (reported at a frequency of  $\geq 2\%$  and for which the frequency for Kryxana exceeds the frequency for placebo) were neutropenia, leukopenia, abnormal liver function tests, lymphopenia, infections, back pain, anaemia, fatigue, hypophosphataemia and vomiting.

In addition, the safety of Kryxana in combination with letrozole was evaluated in men (n=39) in an open-label, multicenter clinical study (COMPLEMENT-1) for the treatment of patients with HR-positive, HER2-negative, advanced breast cancer who received no prior hormonal therapy for advanced disease. The median duration of exposure to Kryxana was 20.8 months (range: 0.5 to 30.6 months).

Adverse reactions occurring in men treated with Kryxana plus letrozole and goserelin or leuprolide were similar to those occurring in women treated with Kryxana plus endocrine therapy.

### Tabulated summary of adverse drug reactions based on pooled data set from 3 phase III clinical studies

ADRs from the phase III clinical studies (Table 7) are listed by MedDRA system organ class. Within each system organ class, the adverse drug reactions are ranked by frequency, with the most frequent reactions first. Within each frequency grouping, adverse drug reactions are presented in order of decreasing seriousness. In addition, the corresponding frequency category for each adverse drug reaction is based on the following convention (CIOMS III): very common ( $\geq 1/10$ ); common ( $\geq 1/100$  to  $< 1/10$ ); uncommon ( $\geq 1/1,000$  to  $< 1/100$ ); rare ( $\geq 1/10,000$  to  $< 1/1,000$ ); very rare ( $< 1/10,000$ ).

**Table 7 Adverse drug reactions based on pooled data set from 3 phase III clinical studies**

Adverse drug reactions	Kryxana N=1065 n (%) All Grades	Placebo N=818 n (%) All Grades	Kryxana N=1065 n (%) Grades 3/4	Placebo N=818 n (%) Grades 3/4	Frequency category  All Grades
<b>Infections and infestations</b>					
Infections <sup>1</sup>	502 (47.1)	282 (34.5)	49 (4.6)	12 (1.5)	Very common
<b>Blood and lymphatic system disorders</b>					
Neutropenia	803 (75.4)	54 (6.6)	662 (62.2)	18 (2.2)	Very common
Leukopenia	350 (32.9)	27 (3.3)	184 (17.3)	5 (0.6)	Very common
Anaemia	228 (21.4)	69 (8.4)	41 (3.8)	18 (2.2)	Very common
Lymphopenia	124 (11.6)	21 (2.6)	67 (6.3)	8 (1.0)	Very common
Thrombocytopenia	105 (9.9)	15 (1.8)	9 (0.8)	2 (0.2)	Common
Febrile neutropenia	18 (1.7)	2 (0.2)	17 (1.6)	2 (0.2)	Common
<b>Eye disorders</b>					
Lacrimation increased	77 (7.2)	11 (1.3)	0	0	Common
Dry eye	64 (6.0)	24 (2.9)	0	0	Common
<b>Metabolism and nutrition disorders</b>					
Decreased appetite	182 (17.1)	110 (13.4)	6 (0.6)	1 (0.1)	Very common
Hypocalcaemia	50 (4.7)	14 (1.7)	12 (1.1)	0	Common
Hypokalaemia	44 (4.1)	23 (2.8)	16 (1.5)	6 (0.7)	Common
Hypophosphataemia	35 (3.3)	12 (1.5)	22 (2.1)	7 (0.9)	Common
<b>Nervous system disorders</b>					
Headache	290 (27.2)	191 (23.3)	7 (0.7)	5 (0.6)	Very common
Dizziness	149 (14.0)	93 (11.4)	2 (0.2)	1 (0.1)	Very common
Vertigo	64 (6.0)	14 (1.7)	2 (0.2)	0	Common
<b>Cardiac disorders</b>					
Syncope	25 (2.3)	13 (1.6)	18 (1.7)	8 (1.0)	Common
<b>Respiratory, thoracic and mediastinal disorders</b>					
Cough	258 (24.2)	152 (18.6)	0	0	Very common

Adverse drug reactions	Kryxana N=1065 n (%) All Grades	Placebo N=818 n (%) All Grades	Kryxana N=1065 n (%) Grades 3/4	Placebo N=818 n (%) Grades 3/4	Frequency category  All Grades
Dyspnoea	155 (14.6)	95 (11.6)	20 (1.9)	8 (1.0)	Very common
<b>Musculoskeletal and connective tissue disorders</b>					
Back pain	256 (24.0)	180 (22.0)	23.0 (2.2)	11 (1.3)	Very common
<b>Gastrointestinal disorders</b>					
Nausea	496 (46.6)	242 (29.6)	18 (1.7)	5 (0.6)	Very common
Diarrhoea	354 (33.2)	191 (23.3)	20 (1.9)	6 (0.7)	Very common
Vomiting	307 (28.8)	143 (17.5)	23 (2.2)	3 (0.4)	Very common
Constipation	271 (25.4)	140 (17.1)	9 (0.8)	0	Very common
Abdominal pain <sup>2</sup>	208 (19.5)	121 (14.8)	16 (1.5)	5 (0.6)	Very common
Stomatitis	147 (13.8)	59 (7.2)	4 (0.4)	1 (0.1)	Very common
Dyspepsia	108 (10.1)	48 (5.9)	1 (0.1)	0	Very common
Dysgeusia	75 (7.0)	39 (4.8)	1 (0.1)	0	Common
<b>Hepatobiliary disorders</b>					
Hepatotoxicity <sup>3</sup>	20 (1.9)	7 (0.9)	16 (1.5)	4 (0.5)	Common
<b>Skin and subcutaneous tissue disorders</b>					
Alopecia	268(25.2)	102 (12.5)	0	0	Very common
Rash <sup>4</sup>	253 (23.8)	81 (9.9)	10 (0.9)	1 (0.1)	Very common
Pruritus	197 (18.5)	57 (7.0)	5 (0.5)	0	Very common
Dry skin	96 (9.0)	23 (2.8)	0	0	Common
Erythema	55 (5.2)	13 (1.6)	2 (0.2)	1 (0.1)	Common
Vitiligo	30 (2.8)	0	1 (0.1)	0	Common
<b>General disorders and administration site conditions</b>					
Fatigue	373 (35.0)	263 (32.2)	23 (2.2)	5 (0.6)	Very common
Peripheral oedema	171 (16.1)	83 (10.1)	2 (0.2)	0	Very common
Pyrexia	168 (15.8)	60 (7.3)	5 (0.5)	1 (0.1)	Very common
Asthenia	161 (15.1)	108 (13.2)	10 (0.9)	3 (0.4)	Very common
Oropharyngeal pain	87 (8.2)	46 (5.6)	0	0	Common
Dry mouth	83 (7.8)	51 (6.2)	1 (0.1)	0	Common
<b>Investigations</b>					
Abnormal liver function tests <sup>5</sup>	216 (20.3)	89 (10.9)	105 (9.9)	17 (2.1)	Very common
Blood creatinine increased	84 (7.9)	20 (2.4)	7 (0.7)	0	Common
Electrocardiogram QT prolonged	73 (6.9)	14 (1.7)	14 (1.3)	2 (0.2)	Common

<sup>1</sup> Infections: urinary tract infections; respiratory tract infections; gastroenteritis; sepsis (<1%).

Adverse drug reactions	Kryxana N=1065 n (%) All Grades	Placebo N=818 n (%) All Grades	Kryxana N=1065 n (%) Grades 3/4	Placebo N=818 n (%) Grades 3/4	Frequency category  All Grades
<sup>2</sup> Abdominal pain: abdominal pain, abdominal pain upper.					
<sup>3</sup> Hepatotoxicity: hepatic cytolysis, hepatocellular injury, drug induced liver injury, hepatotoxicity, hepatic failure, autoimmune hepatitis (single case).					
<sup>4</sup> Rash: rash, rash maculopapular, rash pruritic.					
<sup>5</sup> Abnormal liver function tests: ALT increased, AST increased, blood bilirubin increased.					

## Laboratory abnormalities

Clinically relevant abnormalities of routine hematological or biochemical laboratory values from the data set of 3 pooled phase III studies, are presented in Table 8.

**Table 8 Laboratory abnormalities based on pooled dataset from phase III clinical studies**

Laboratory abnormalities	Kryxana N=1065 n (%) All Grades	Placebo N=818 n (%) All Grades	Kryxana N= 1065 n (%) Grades 3/4	Placebo N=818 n (%) Grades 3/4	Frequency category (all Grades)
<b>Haematological parameters</b>					
Leukocyte count decreased	1009 (94.7)	268 (32.8)	380 (35.7)	10 (1.2)	Very common
Neutrophil count decreased	994 (93.3)	227 (27.8)	660 (62.0)	20 (2.4)	Very common
Haemoglobin decreased	728 (68.4)	339 (41.4)	54 (5.1)	19 (2.3)	Very common
Lymphocyte count decreased	703 (66.0)	228 (27.9)	209 (19.6)	37 (4.5)	Very common
Platelet count decreased	366 (34.4)	86 (10.5)	16 (1.5)	5 (0.6)	Very common
<b>Biochemical parameters</b>					
AST increased	580 (54.5)	343 (41.9)	83 (7.8)	17 (2.1)	Very common
Gamma GT increased <sup>1</sup>	390 (53.4)	229 (46.9)	67 (9.2)	51 (10.5)	Very common
ALT increased	548 (51.5)	315 (38.5)	119 (11.2)	14 (1.7)	Very common
Creatinine increased	447 (42.0)	121 (14.8)	14 (1.3)	2 (0.2)	Very common
Glucose serum decreased	216 (20.3)	113 (13.8)	3 (0.3)	2 (0.2)	Very common
Phosphorous decreased	190 (17.8)	79(9.7)	46 (4.3)	8 (1.0)	Very common
Albumin decreased	122 (11.5)	53 (6.5)	1 (0.1)	1 (0.1)	Very common
Potassium decreased	118 (11.1)	76 (9.3)	22 (2.1)	10 (1.2)	Very common
Bilirubin increased	64 (6.0)	46 (5.6)	12 (1.1)	9 (1.1)	Common
<sup>1</sup> Data collected from study MONALEESA-3 and study MONALEESA-7. Data based on sample size N=731 for ribociclib arm and N=488 for placebo arm.					

## Post marketing data

The following ADRs are derived from post-marketing experience with Kryxana via spontaneous case reports and literature cases. As these reactions are reported voluntarily from

a population of uncertain size, it is not possible to reliably estimate their frequency which is therefore categorized as not known.

**Table 9 Adverse drug reactions derived from spontaneous reports and literature (frequency not known)**

---

<b>Respiratory, thoracic and mediastinal disorders</b>
Interstitial lung disease (ILD)/pneumonitis

---

<b>Skin and subcutaneous tissue disorders</b>
Toxic epidermal necrolysis (TEN)

---

## Description of selected adverse drug reactions

### Neutropenia

Neutropenia was most frequently reported by laboratory findings in the phase III studies. Based on its severity, neutropenia was managed by laboratory monitoring, dose interruption and/or dose modification. Treatment discontinuation due to neutropenia was low (0.8%) in patients receiving Kryxana plus any combination partner (see sections DOSAGE REGIMEN AND ADMINISTRATION and WARNINGS AND PRECAUTIONS).

### Hepatobiliary toxicity

In the phase III clinical studies, hepatobiliary toxicity events occurred in a higher proportion of patients in the Kryxana plus any combination arms vs the placebo plus any combination arms (27.3% vs 19.6%, respectively), with more Grade 3/4 AEs reported in patients treated with Kryxana plus any combination treatment (13.2% vs 6.1%, respectively). Dose interruptions and/or adjustments due to hepatobiliary toxicity events were reported in 12.3% of Kryxana-treated patients, primarily due to ALT increased (7.9%) and/or AST increased (7.3%). Discontinuation of treatment with Kryxana due to abnormal liver function tests and hepatotoxicity occurred in 2.4% and 0.3% of patients, respectively (see section WARNINGS AND PRECAUTIONS).

### QT prolongation

In the phase III clinical studies, 9.3% of patients in the Kryxana arm and 3.5% in the placebo arm had at least one event of QT interval prolongation (including ECG QT interval prolonged, syncope). Dose interruptions-adjustments were reported in 2.9% of Kryxana treated patients due to electrocardiogram QT interval prolonged and syncope.

A central analysis of ECG data (average of triplicate) showed 55 patients (5.2%) and 12 patients (1.5%) with at least one post-baseline QTcF interval >480 m sec for the Kryxana treatment arm and the placebo arm, respectively. Among the patients who had QTcF interval prolongation of >480 ms, the median time to onset was 15 days, regardless of the combination and these changes were reversible with dose interruption and/or dose adjustment. (see sections DOSAGE REGIMEN AND ADMINISTRATION, WARNINGS AND PRECAUTIONS and CLINICAL PHARMACOLOGY).

## INTERACTIONS

Ribociclib is primarily metabolized by CYP3A and is a time-dependent inhibitor of CYP3A *in vivo*. Therefore, medicinal products which can influence CYP3A enzyme activity may alter the pharmacokinetics of ribociclib.

### **Medicinal products that may increase ribociclib plasma concentrations**

Co-administration of a strong CYP3A4 inhibitor (ritonavir) increased ribociclib exposure in healthy subjects by 3.21-fold. Physiologically-based pharmacokinetic (PBPK) simulation estimated that co-administration of ritonavir (100 mg twice daily) with multiple daily doses of ribociclib may increase ribociclib steady-state C<sub>max</sub> and AUC<sub>0-24h</sub> by 1.29 and 1.47-fold, respectively. Concomitant use of strong CYP3A inhibitors, including but not limited to clarithromycin, indinavir, itraconazole, ketoconazole, lopinavir, ritonavir, nefazodone, nelfinavir, posaconazole, ritonavir, saquinavir, telaprevir, telithromycin, verapamil, and voriconazole (see section WARNINGS AND PRECAUTIONS), should be avoided. Alternative concomitant medications with a low potential to inhibit CYP3A should be considered, and patients should be monitored for ADRs (see sections DOSAGE REGIMEN AND ADMINISTRATION, WARNINGS AND PRECAUTIONS and CLINICAL PHARMACOLOGY).

If co-administration of Kryxana with a strong CYP3A inhibitor cannot be avoided, the Kryxana dose should be reduced to 400 mg. However, there are no clinical data with this dose adjustment (see section DOSAGE REGIMEN AND ADMINISTRATION). If the strong inhibitor is discontinued, the Kryxana dose should be resumed (after at least 5 elimination half-lives of the CYP3A inhibitor) to the dose used prior to the initiation of the strong CYP3A inhibitor. Due to inter-patient variability, the recommended dose adjustments may not be optimal in all patients, therefore, close monitoring for ADRs is recommended. In the event of Kryxana-related toxicity, the dose should be modified (see section DOSAGE REGIMEN AND ADMINISTRATION), or treatment should be interrupted until toxicity has resolved (see sections DOSAGE REGIMEN AND ADMINISTRATION and CLINICAL PHARMACOLOGY)

Patients should be instructed to avoid grapefruits or grapefruit juice, all of which are known to inhibit cytochrome CYP3A enzymes and may increase the exposure to ribociclib.

### **Medicinal products that may decrease ribociclib plasma concentrations**

Co-administration of a strong CYP3A4 inducer (rifampin) decreased the plasma exposure of ribociclib in healthy subjects by 89%. Avoid concomitant use of strong CYP3A inducers, including but not limited to phenytoin, rifampin, carbamazepine, and St John's Wort (*Hypericum perforatum*). An alternate concomitant medication with no or minimal potential to induce CYP3A should be considered (see sections WARNINGS AND PRECAUTIONS and CLINICAL PHARMACOLOGY).

### **Medicinal products that may have their plasma concentrations altered by ribociclib**

Co-administration of midazolam (CYP3A4 substrate) with multiple doses of Kryxana (400 mg) increased the midazolam exposure by 280% (3.80-fold) in healthy subjects compared with administration of midazolam alone. Simulations using physiologically-based PK (PBPK) models suggested that Kryxana given at the clinically relevant dose of 600 mg is expected to increase the midazolam AUC by 5.2-fold. Therefore, caution is recommended when Kryxana is administered with CYP3A substrates with a narrow therapeutic index. The dose of a sensitive CYP3A substrate with a narrow therapeutic index, including but not limited to alfentanil, cyclosporine, dihydroergotamine, ergotamine, everolimus, fentanyl, pimozide, quinidine, sirolimus and tacrolimus, may need to be reduced as ribociclib has the potential to increase their exposure (see section CLINICAL PHARMACOLOGY).

Co-administration of caffeine (CYP1A2 substrate) with multiple doses of Kryxana (400 mg) increased caffeine exposure by 20% (1.20-fold) in healthy subjects, compared with administration of caffeine alone. At the clinically relevant dose of 600 mg, simulations using PBPK models predicted only weak inhibitory effects of ribociclib on CYP1A2 substrates (<2-fold increase in AUC) (see section CLINICAL PHARMACOLOGY).

### **Medicinal products that are substrates of transporters**

*In vitro* evaluations indicated that ribociclib has a low potential to inhibit the activities of drug transporters P-gp, OAT1/3, OATP1B1/B3, MATE2K and OCT1 at clinically relevant concentrations. Ribociclib may inhibit BCRP, OCT2, MATE1, and human BSEP at clinically relevant concentrations (see section CLINICAL PHARMACOLOGY).

### **Drug-food interactions**

Kryxana can be administered with or without food (see section DOSAGE REGIMEN AND ADMINISTRATION).

Compared to the fasted state, oral administration of a single 600 mg dose of Kryxana film-coated tablets with a high-fat, high-calorie meal had no effect on the rate and extent of absorption of ribociclib ( $C_{max}$  GMR: 1.00; 90% CI: 0.898, 1.11;  $AUC_{inf}$  GMR: 1.06; 90% CI: 1.01, 1.12 (see section CLINICAL PHARMACOLOGY).

### **Gastric pH elevating medications**

Ribociclib exhibits high solubility at or below pH 4.5 and in bio-relevant media (at pH 5.0 and 6.5). Co-administration of Kryxana with medicinal products that elevate the gastric pH was not evaluated in a clinical trial; however, altered ribociclib absorption was not observed in the population pharmacokinetic analysis nor in simulations using PBPK models (see section CLINICAL PHARMACOLOGY).

### **Anticipated interactions**

**Antiarrhythmic medicines and other medicinal products that may prolong the QT interval:** Co-administration of Kryxana should be avoided with medicinal products with known potential to prolong the QT interval such as antiarrhythmic medicines. Concomitant use of antiarrhythmic medicines (including but not limited to amiodarone, disopyramide, procainamide, quinidine, and sotalol), other medicinal products that are known to prolong the QT interval, including but not limited to chloroquine, halofantrine, clarithromycin, ciprofloxacin, levofloxacin, azithromycin, haloperidol, methadone, moxifloxacin, bepridil, pimozone and ondansetron (i.v), should be avoided. Kryxana is not recommended for use in combination with tamoxifen (see section WARNINGS AND PRECAUTIONS).

## **PREGNANCY, LACTATION, FEMALES AND MALES OF REPRODUCTIVE POTENTIAL**

### **Pregnancy**

#### **Risk summary**

Based on animal data and its mechanism of action, it is possible that Kryxana can cause fetal harm when administered to a pregnant woman.

The patient should be advised of the risk to a fetus, if Kryxana is used during pregnancy or if the patient becomes pregnant while taking this medicinal product.

There are no adequate and well-controlled studies in pregnant women. Reproductive studies in rats and rabbits have demonstrated ribociclib-induced embryotoxicity, fetotoxicity and teratogenicity. Following prenatal exposure, increased incidences of post-implantation loss and reduced fetal weights were observed in rats and ribociclib was teratogenic in rabbits as evidenced by increased incidences of fetal abnormalities (malformations and external, visceral, and skeletal variants) at exposures lower than or 1.5 times the exposure in humans, respectively, at the highest recommended dose of 600 mg/day based on AUC. There are no available human data informing the drug-associated risk.

## Data

### Animal data

In embryo-fetal development studies in rats and rabbits, pregnant animals received oral doses of ribociclib up to 1,000 mg/kg/day and 60 mg/kg/day, respectively, during the period of organogenesis.

In rats, 1,000 mg/kg/day was lethal in the maternal animals. At 300 mg/kg/day, a slight, non-adverse trend towards reduced maternal body weight gain and fetal toxicity evidenced by reduced fetal weights accompanied by skeletal changes were considered to be transitory and/or related to the lower fetal weights. There were no effects upon embryo-fetal mortality or adverse effects on fetal morphology at 50 or 300 mg/kg/day. The no-observed-adverse-effect level (NOAEL) for maternal toxicity was considered to be 300 mg/kg/day. The no-observed-effect-level (NOEL) for embryo-fetal development was considered to be 50 mg/kg/day.

In rabbits at doses  $\geq 30$  mg/kg/day, there were adverse effects on embryo-fetal development as evidenced by increased incidences of fetal abnormalities (malformations and external, visceral and skeletal variants) and fetal growth (lower fetal weights). These findings included reduced/small lung lobes and additional vessel on the aortic arch and diaphragmatic hernia, absent accessory lobe or (partly) fused lung lobes and reduced/small accessory lung lobe (30 and 60 mg/kg), extra/rudimentary 13<sup>th</sup> ribs and misshapen hyoid bone and reduced number of phalanges in the pollex. There was no evidence of embryo-fetal mortality. The no-observed-effect level (NOEL) for maternal toxicity was considered to be at least 30 mg/kg/day and the NOEL for the embryo-fetal development was 10 mg/kg/day.

At 300 mg/kg/day in rats and 30 mg/kg/day in rabbits, the maternal systemic exposure (AUC) were 13,800 ng\*hr/mL and 36,700 ng\*hr/mL, lower than or at 1.5 times, the one achieved in patients at the highest recommended dose of 600 mg/day.

## Lactation

### Risk summary

It is not known if ribociclib is present in human milk. There are no data on the effects of ribociclib on the breastfed child or the effects of ribociclib on milk production. Ribociclib and its metabolites readily passed into the milk of lactating rats. Because of the potential for serious adverse reactions in nursing infants from Kryxana, a decision should be made whether to discontinue nursing or to discontinue the drug, taking into account the importance of the drug to the mother. It is recommended that women taking Kryxana should not breastfeed for at least 21 days after the last dose.



## Data

### Animal data

In lactating rats administered a single dose of 50 mg/kg, exposure to ribociclib was 3.56-fold higher in milk than in maternal plasma.

### Females and males of reproductive potential

Based on animal studies, Kryxana can cause fetal harm when administered to a pregnant woman (see section NON-CLINICAL SAFETY DATA).

### Pregnancy testing

For females of reproductive potential the pregnancy status should be verified prior to initiating treatment with Kryxana.

### Contraception

Females of reproductive potential should be advised that animal studies have been performed showing ribociclib to be harmful to the developing fetus. Sexually active females of reproductive potential should use effective contraception (methods that result in < 1% pregnancy rates) when using Kryxana during treatment and for 21 days after stopping treatment with Kryxana.

### Infertility

In a fertility study in female rats, ribociclib did not affect the reproductive function, fertility or early embryonic development at any dose up to 300 mg/kg/day (likely at an exposure lower than or equal to patients clinical exposure at the highest recommended dose of 600 mg/day based on AUC).

A fertility study in male rats has not been performed; however, atrophic changes in testes were reported in repeated-dose toxicity studies in rats and dogs at exposures that were less or equal to the human exposure at the highest recommended daily dose of 600 mg/day based on AUC (see section NON-CLINICAL SAFETY DATA). There are no clinical data available regarding the effects of Kryxana on fertility. Based on animal studies, Kryxana may impair fertility in males of reproductive potential.

## OVERDOSAGE

There is limited experience with reported cases of Kryxana overdose in humans. General symptomatic and supportive measures should be initiated in all cases of overdose where necessary.

## CLINICAL PHARMACOLOGY

### Mechanism of action (MOA)

Ribociclib is a selective inhibitor of CDK 4 and 6. These kinases are activated upon binding to D-cyclins and play a crucial role in signaling pathways which lead to cell cycle progression and cellular proliferation. The cyclin D-CDK4/6 complex regulates cell cycle progression through phosphorylation of the retinoblastoma protein (pRb).

*In vitro*, ribociclib decreased pRb phosphorylation, leading to arrest in the G1 phase of the cell cycle, and reduced cell proliferation in breast cancer cell lines. *In vivo*, treatment with single-agent

ribociclib led to tumor regressions which correlated with inhibition of pRb phosphorylation at well-tolerated doses.

*In vivo* studies using patient-derived estrogen-positive breast cancer xenograft models combination of ribociclib and antiestrogens (i.e., letrozole) resulted in superior inhibition of tumor growth compared to each drug alone. Tumor regrowth was delayed for 33 days after stopping dosing. Additionally, the *in vivo* antitumor activity of ribociclib in combination with fulvestrant was assessed in immune-deficient mice bearing the ZR751 ER+ human breast cancer xenografts. The combination of ribociclib and fulvestrant resulted in complete tumor growth inhibition.

## Pharmacodynamics (PD)

Ribociclib inhibits the CDK4/cyclin-D1 and CDK6/cyclin-D3 enzyme complexes with concentration resulting in 50% inhibition (IC<sub>50</sub>) values of 0.01 (4.3 ng/mL) and 0.039 micromolar (16.9 ng/mL) in biochemical assays, respectively.

In cell-based assays, ribociclib inhibits CDK4/6-dependent pRb phosphorylation with an average IC<sub>50</sub> of 0.06 micromolar (26 ng/mL). Ribociclib halts G1 to S phase cell cycle progression measured by flow cytometry with an average IC<sub>50</sub> of 0.11 micromolar (47.8 ng/mL). Ribociclib also inhibits cellular proliferation measured by bromodeoxyuridine (BrdU) uptake with an IC<sub>50</sub> of 0.8 micromolar (34.8 ng/mL). The similar IC<sub>50</sub> values obtained from the target modulation, cell cycle and proliferation assays confirm that the blockade of pRb phosphorylation by ribociclib directly leads to G1 to S phase arrest and subsequent inhibition of cellular proliferation. When tested in a panel of breast cancer cell lines with known ER status, ribociclib was demonstrated to be more efficacious in ER+ breast cancer cell lines than in the ER- ones.

## Cardiac electrophysiology

Serial, triplicate ECGs were collected following a single dose and at steady state to evaluate the effect of ribociclib on the QTc interval in patients with advanced cancer. A pharmacokinetic-pharmacodynamic analysis included a total of 997 patients treated with ribociclib at doses ranging from 50 to 1,200 mg. The analysis suggested that ribociclib causes concentration-dependent increases in the QTc interval. The estimated QTcF interval mean change from baseline for Kryxana 600 mg dose in combination with NSAID or fulvestrant was 22.00 ms (90% CI: 20.56, 23.44) and 23.7 ms (90% CI: 22.31, 25.08), respectively, at the geometric mean C<sub>max</sub> at steady state compared to 34.7 ms (90% CI: 31.64, 37.78) in combination with tamoxifen. (see section WARNINGS AND PRECAUTIONS).

## Pharmacokinetics (PK)

The pharmacokinetics of ribociclib were investigated in patients with advanced cancer following oral daily doses of 50 mg to 1,200 mg. Healthy subjects received single oral doses of 400 or 600 mg or repeated daily oral doses (8 days) of 400 mg.

## Absorption

Following oral administration of Kryxana to patients with advanced solid tumors or lymphomas peak plasma levels (C<sub>max</sub>) of ribociclib were achieved between 1 and 4 hours (time to reach maximum concentration, T<sub>max</sub>). The geometric mean absolute bioavailability of ribociclib after a single oral dose of 600 mg was 65.8% in healthy subjects. Ribociclib exhibited slightly over-proportional increases in exposure (C<sub>max</sub> and AUC) across the dose range tested (50 to 1,200 mg). Following repeated once-daily dosing, steady-state was generally achieved after 8 days and ribociclib accumulated with a geometric mean accumulation ratio of 2.51 (range: 0.972 to 6.40).

### Food effect

Compared to the fasted state, oral administration of a single 600 mg dose of ribociclib film-coated tablet formulation with a high-fat, high-calorie meal had no effect on the rate and extent of absorption of ribociclib ( $C_{\max}$  GMR: 1.00; 90% CI: 0.898, 1.11;  $AUC_{\text{inf}}$  GMR: 1.06; 90% CI: 1.01, 1.12) (see section INTERACTIONS).

### Distribution

Binding of ribociclib to human plasma proteins *in vitro* was approximately 70% and independent of concentration (10 to 10,000 ng/mL). Ribociclib was equally distributed between red blood cells and plasma with a mean *in vivo* blood-to-plasma ratio of 1.04. The apparent volume of distribution at steady-state ( $V_{\text{ss}}/F$ ) was 1,090 L based on the population pharmacokinetic analysis.

### Biotransformation/metabolism

*In vitro* and *in vivo* studies indicated that ribociclib undergoes extensive hepatic metabolism mainly via CYP3A4 in humans. Following oral administration of a single 600 mg dose of [ $^{14}\text{C}$ ]ribociclib to humans, the primary metabolic pathways for ribociclib involved oxidation (dealkylation, C- and/or N-oxygenation, oxidation (-2H)) and combinations thereof. Phase II conjugates of ribociclib phase I metabolites involved N-acetylation, sulfation, cysteine conjugation, glycosylation and glucuronidation. Ribociclib was the major circulating drug-derived entity in plasma (43.5%). The major circulating metabolites included metabolite M13 (CCI284, N-hydroxylation), M4 (LEQ803, N-demethylation), and M1 (secondary glucuronide), each representing an estimated 9.39%, 8.60%, and 7.78% of total radioactivity, and 21.6%, 19.8%, and 17.9% of ribociclib exposure, respectively. Clinical activity (pharmacological and safety) of ribociclib was primarily due to parent drug, with negligible contribution from circulating metabolites.

Ribociclib was extensively metabolized with the unchanged drug accounting for 17.3% and 12.1% of the dose in feces and urine, respectively. Metabolite LEQ803 was a significant metabolite in excreta and represented approximately 13.9% and 3.74% of the administered dose in feces and urine, respectively. Numerous other metabolites were detected in both feces and urine in minor amounts ( $\leq 2.78\%$  of the administered dose).

### Elimination

The geometric mean plasma effective half-life (based on accumulation ratio) was 32.0 hours (63% CV) and the geometric mean apparent oral clearance ( $CL/F$ ) was 25.5 L/hr (66% CV) at steady-state at 600 mg in patients with advanced cancer. The geometric mean plasma terminal half-life ( $T_{1/2}$ ) of ribociclib ranged from 29.7 to 54.7 hours and the geometric mean  $CL/F$  of ribociclib ranged from 39.9 to 77.5 L/hr at 600 mg across studies in healthy subjects.

Ribociclib is eliminated mainly via the feces, with a small contribution from the renal route. In 6 healthy male subjects, following a single oral dose of [ $^{14}\text{C}$ ] ribociclib, 91.7% of the total administered radioactive dose was recovered within 21 days; feces were the major route of excretion (69.1%), with 22.6% of the dose recovered in the urine.

### Linearity/non-linearity

Ribociclib exhibited slightly over-proportional increases in exposure ( $C_{\max}$  and AUC) across the dose range of 50 mg to 1,200 mg following both single dose and repeated doses. This

analysis is limited by the small sample sizes for most of the dose cohorts, with a majority of the data coming from the 600 mg dose cohort.

## Special populations

### Renal impairment

The effect of renal function on the pharmacokinetics of ribociclib was also assessed in a renal impairment study in non-cancer subjects that included 14 subjects with normal renal function (absolute Glomerular Filtration Rate (aGFR)  $\geq 90$  mL/min), 8 subjects with mild renal impairment (aGFR 60 to  $< 90$  mL/min), 6 subjects with moderate renal impairment (aGFR 30 to  $< 60$  mL/min), 7 subjects with severe renal impairment (aGFR 15 to  $< 30$  mL/min), and 3 subjects with end stage renal disease (ESRD) (aGFR  $< 15$  mL/min) at a single oral ribociclib dose of 400 mg/day.

AUC<sub>inf</sub> increased to 1.62-fold, 1.94-fold and 2.67-fold, and C<sub>max</sub> increased to 1.80-fold, 1.79-fold and 2.30-fold in subjects with mild, moderate and severe renal impairment, relative to the exposure in subjects with normal renal function. A fold difference for subjects with ESRD was not calculated due to the small number of subjects (see section DOSAGE REGIMEN AND ADMINISTRATION).

No dose adjustment is necessary in patients with mild or moderate renal impairment. The effect of renal function on the pharmacokinetics of ribociclib was also assessed in cancer patients. Based on a population pharmacokinetic analysis that included 438 cancer patients with normal renal function (eGFR  $\geq 90$  mL/min/1.73 m<sup>2</sup>), 488 patients with mild renal impairment (eGFR 60 to  $< 90$  mL/min/1.73 m<sup>2</sup>) and 113 patients with moderate renal impairment (eGFR 30 to  $< 60$  mL/min/1.73 m<sup>2</sup>), mild and moderate renal impairment had no effect on the exposure of ribociclib. In addition, in a sub-group analysis of PK data from studies in cancer patients following oral administration of ribociclib 600 mg as a single dose or repeat doses (MONALEESA-7, CLEE011X2101 and CLEE011X2107), AUC and C<sub>max</sub> of ribociclib following a single dose or at steady state in patients with mild or moderate renal impairment were comparable to patients with normal renal function, suggesting no clinically meaningful effect of mild or moderate renal impairment on ribociclib exposure (see section DOSAGE REGIMEN AND ADMINISTRATION).

### Hepatic impairment

No dose adjustment is necessary in patients with mild hepatic impairment (Child-Pugh A); a dose adjustment is required in patients with moderate (Child-Pugh B) and severe hepatic impairment (Child-Pugh C) and a starting dose of 400 mg is recommended. Based on a pharmacokinetic trial in patients with hepatic impairment, mild hepatic impairment had no effect on the exposure of ribociclib. The mean exposure for ribociclib was increased less than 2-fold in patients with moderate (geometric mean ratio [GMR]: 1.44 for C<sub>max</sub>; 1.28 for AUC<sub>inf</sub>) and severe (GMR: 1.32 for C<sub>max</sub>; 1.29 for AUC<sub>inf</sub>) hepatic impairment. Based on a population pharmacokinetic analysis that included 160 patients with normal hepatic function and 47 patients with mild hepatic impairment, mild hepatic impairment had no effect on the exposure of ribociclib, further supporting the findings from the dedicated hepatic impairment study (see section DOSAGE REGIMEN AND ADMINISTRATION).

## Effect of age, weight, gender and race

The population pharmacokinetic analysis showed that there are no clinically relevant effects of age, body weight, gender, or race on the systemic exposure of ribociclib that would require a dose adjustment.

## Geriatric patients

Of the 334 patients who received Kryxana in the phase III study (MONALEESA 2, ribociclib plus letrozole arm), 150 patients (44.9%) were  $\geq 65$  years of age and 35 patients (10.5%) were  $\geq 75$  years of age. Of 483 patients who received Kryxana in the phase III study (MONALEESA 3, ribociclib plus fulvestrant arm), 226 patients (46.8%) were  $\geq 65$  years of age and 65 patients (13.5%) were  $\geq 75$  years of age. No overall differences in the safety or effectiveness of Kryxana were observed between these patients and younger patients (see section DOSAGE REGIMEN AND ADMINISTRATION).

## Interactions

**Strong CYP3A inhibitors:** A drug interaction study in healthy subjects was conducted with ritonavir (strong CYP3A inhibitor). Compared to ribociclib alone, ritonavir (100 mg b.i.d for 14 days) increased ribociclib  $C_{max}$  and  $AUC_{inf}$  by 1.7-fold and 3.2-fold, respectively, following a single 400 mg ribociclib dose.  $C_{max}$  and  $AUC_{last}$  for LEQ803 (a prominent metabolite of ribociclib, accounting for less than 10% of parent exposure) decreased by 96% and 98%, respectively. PBPK simulations with co-administered ritonavir (100 mg twice daily) estimated that the steady-state  $C_{max}$  and  $AUC_{0-24h}$  of ribociclib (400 mg once daily) increase by 1.29 and 1.47-fold, respectively, in patients with cancer.

**Strong CYP3A inducers:** A drug interaction study in healthy subjects was conducted with rifampicin (strong CYP3A4 inducer). Compared to ribociclib alone, rifampicin (600 mg daily for 14 days) decreased ribociclib  $C_{max}$  and  $AUC_{inf}$  by 81% and 89%, respectively, following a single 600 mg ribociclib dose. LEQ803  $C_{max}$  increased 1.7-fold and  $AUC_{inf}$  decreased by 27%, respectively. Simulations using PBPK suggested that a moderate CYP3A inducer (efavirenz) may decrease ribociclib single dose  $C_{max}$  and AUC by 37% and 60%, respectively (see section INTERACTIONS).

**Cytochrome P450 enzymes (CYP3A4 and CYP1A2 substrates):** A drug interaction study in healthy subjects was conducted as a cocktail study with midazolam (sensitive CYP3A4 substrate) and caffeine (sensitive CYP1A2 substrate). Compared to midazolam and caffeine alone, multiple doses of ribociclib (400 mg once daily for 8 days) increased midazolam  $C_{max}$  and  $AUC_{inf}$  by 2.1-fold and 3.8-fold, respectively. Simulations using PBPK suggested that at a 600 mg ribociclib dose, midazolam  $C_{max}$  and AUC may increase 2.4-fold and 5.2-fold, respectively. The effect of multiple doses of ribociclib on caffeine was minimal, with  $C_{max}$  decreasing by 10% and  $AUC_{inf}$  increasing slightly by 20%. Simulations using PBPK suggested only weak inhibitory effects on CYP1A2 substrates at a 600 mg ribociclib dose (see section INTERACTIONS).

Ribociclib exhibited no capacity to inhibit CYP2E1, CYP2A6, CYP2B6, CYP2C8, CYP2C9, CYP2C19, and CYP2D6, and showed no apparent time-dependent inhibition of CYP1A2, CYP2C9, and CYP2D6 at clinically relevant concentrations. No induction of CYP1A2, CYP2B6, CYP2C9 or CYP3A4 was observed *in vitro* at clinically relevant concentrations (see section INTERACTIONS).

**Gastric pH-elevating agents:** Ribociclib exhibits high solubility at or below pH 4.5 and in bio-relevant media (at pH 5.0 and 6.5). Co-administration of ribociclib with medicinal products that

elevate the gastric pH was not evaluated in a clinical trial; however, altered ribociclib absorption was not observed in population pharmacokinetic analysis nor in simulations using PBPK models (see sections DOSAGE REGIMEN AND ADMINISTRATION AND INTERACTIONS).

**Letrozole:** Data from clinical trials in patients with breast cancer and a population PK analysis indicated no drug interaction between ribociclib and letrozole following co-administration of the drugs.

**Anastrozole:** Data from a clinical trial in patients with breast cancer indicated no clinically relevant drug interaction between ribociclib and anastrozole following coadministration of the drugs.

**Fulvestrant:** Data from a clinical trial in patients with breast cancer indicated no clinically relevant effect of fulvestrant on ribociclib exposure following co-administration of the drugs.

**Tamoxifen:** Data from a clinical trial in patients with breast cancer indicated that tamoxifen exposure was increased approximately 2-fold following co-administration of ribociclib and tamoxifen.

**Effect of ribociclib on transporters:** *In vitro* evaluations indicated that Kryxana has a low potential to inhibit the activities of the drug transporters P-gp, OATP1B1/B3, OCT1, MATE2K at clinically relevant concentrations. Kryxana may inhibit BCRP, OCT2, MATE1, and human BSEP at clinically relevant concentrations (see section INTERACTIONS).

**Effect of transporters on ribociclib:** Based on *in vitro* data, P-gp and BCRP mediated transport are unlikely to affect the extent of oral absorption of ribociclib at therapeutic doses. Ribociclib is not a substrate for hepatic uptake transporters OATP1B1/1B3 or OCT-1 *in vitro* (see section INTERACTIONS).

## CLINICAL STUDIES

### Study CLEE011A2301 (MONALEESA-2)

Kryxana was evaluated in a randomized, double-blind, placebo-controlled, multicenter phase III clinical study in the treatment of postmenopausal women with HR-positive, HER2-negative, advanced breast cancer who received no prior therapy for advanced disease in combination with letrozole versus letrozole alone.

A total of 668 patients were randomized in a 1:1 ratio to receive either Kryxana 600 mg and letrozole (n=334) or placebo and letrozole (n=334), stratified according to the presence of liver and/or lung metastases Yes [n=292 (44%)] vs No [n=376 (56%)]. Demographics and baseline disease characteristics were balanced and comparable between study arms. Kryxana was given orally at a dose of 600 mg daily for 21 consecutive days followed by 7 days off treatment in combination with letrozole 2.5 mg once daily for 28 days. Patients were not allowed to cross over from placebo to Kryxana during the study or after disease progression.

Patients enrolled in this study had a median age of 62 years (range 23 to 91). 44.2% patients were of age 65 years and older including 69 patients (10.3%) of age 75 years and older. The patients included were Caucasian (82.2%), Asian (7.6%), and Black (2.5%). All patients had an ECOG performance status of 0 or 1. A total of 46.6% of patients had received chemotherapy in the neoadjuvant or adjuvant setting and 51.3% had received antihormonal therapy in the neo/adjuvant setting prior to study entry. 34.1% of patients had de novo metastatic disease. 22.0% of patients had bone only disease and 58.8% of patients had visceral disease.

## Primary analysis

The primary endpoint for the study was met at the planned interim analysis conducted after observing 80% of targeted progression-free survival (PFS) events using the Response Evaluation Criteria in Solid Tumors (RECIST v1.1), based on the investigator assessment in the full population (all randomized patients) and confirmed by a blinded independent central radiological assessment.

The efficacy results demonstrated a statistically significant improvement in PFS in patients receiving Kryxana plus letrozole compared to patients receiving placebo plus letrozole in the full analysis set (FAS) (HR: 0.556; 95% CI: 0.429, 0.720; one-sided stratified log-rank test p-value=0.00000329), with an estimated 44% reduction in risk of progression for patients treated with the combination of Kryxana plus letrozole. The median PFS was not reached in the Kryxana plus letrozole arm (95% CI: 19.3, NE) at the time of the primary analysis. The median PFS was 14.7 months (95% CI: 13.0, 16.5) for the placebo plus letrozole arm. Results were consistent across the sub-groups of age, race, prior adjuvant or neo-adjuvant chemotherapy or hormonal therapies, liver and/or lung involvement, and bone-only metastatic disease.

Progression free survival is summarized in Table 10 and the Kaplan-Meier curve for PFS is provided in Figure 1. The results for PFS based on the blinded independent central radiological assessment were consistent with the primary efficacy results based on the investigator's assessment (HR: 0.592; 95% CI: 0.412, 0.852). The one-sided stratified log-rank test p-value was 0.002.

The global health status/Quality of life (QoL) showed no relevant difference between the Kryxana plus letrozole arm and the placebo plus letrozole control arm.

A more mature update of efficacy data demonstrated median PFS was 25.3 months (95% CI: 23.0, 30.3) for Kryxana plus letrozole treated patients and 16.0 months (95% CI: 13.4, 18.2) for patients receiving placebo plus letrozole. 54.7% of patients receiving Kryxana plus letrozole were estimated to be disease progression free at 24 months compared with 35.9% in the placebo plus letrozole arm.

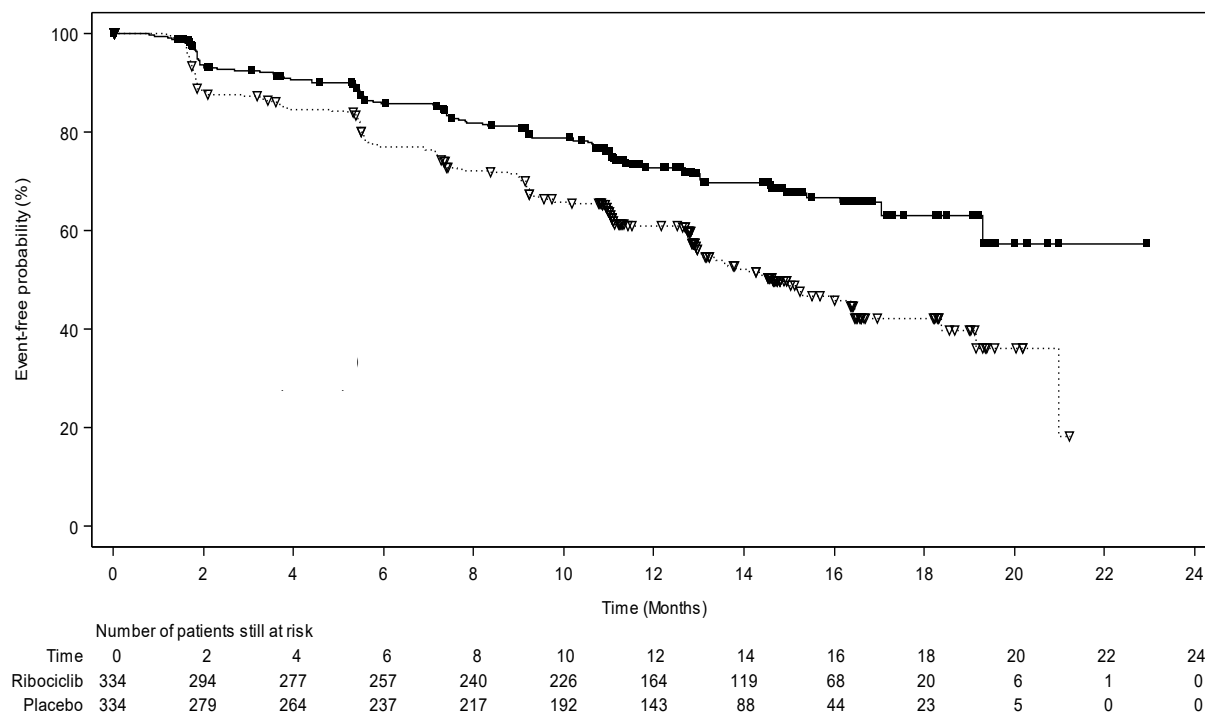
Hazard ratios based on a pre-specified sub-group analysis are in favor of the Kryxana plus letrozole arm, demonstrating that patients benefit independent of age, race, prior adjuvant/ neo-adjuvant chemotherapy or hormonal therapies, liver and/or lung involvement, and bone-only metastasis disease.

**Table 10** MONALEESA-2 (A2301) primary efficacy results (PFS) based on investigator assessment (29-Jan-16 cut-off)

	Kryxana plus letrozole N=334	Placebo plus letrozole N=334
<b>Progression free survival</b>		
Median PFS [months] (95% CI)	NE (19.3 – NE)	14.7 (13.0 – 16.5)
Hazard ratio (95% CI)	0.556 (0.429 to 0.720)	
p-value <sup>a</sup>	0.00000329	

CI=confidence interval; N=number of patients; NE = Not estimable.  
<sup>a</sup> p-value is obtained from the one-sided stratified log-rank test.

**Figure 1** MONALEESA-2 (A2301) Kaplan-Meier plot of PFS based on investigator assessment (FAS) (29-Jan-16 cut-off)



Other secondary endpoints included overall response rate (ORR), time to deterioration of ECOG performance status, safety, and tolerability, and change in patient-reported outcomes (PROs) for health-related quality of life. In the FAS, the overall response rate according to the local radiologist assessment was 40.7% of patients (95% CI: 35.4%, 46.0%) in the Kryxana plus letrozole arm and 27.5% (95% CI: 22.8%, 32.3%) in the placebo plus letrozole arm ( $p=0.000155$ ). The clinical benefit rate (CBR) was 79.6% of patients (95% CI: 75.3%, 84.0%) in the Kryxana plus letrozole arm and 72.8% (95% CI: 68.0%, 77.5%) in the placebo plus letrozole arm ( $p=0.018$ ). In patients with measurable disease, the overall response rate according to the local radiologist assessment was 52.7% of patients (95% CI: 46.6%, 58.9%) in the Kryxana plus letrozole and 37.1% (95% CI: 31.1%, 43.2%) in the placebo plus letrozole arm ( $p=0.00028$ ).

The clinical benefit rate was 80.1% (95% CI: 75.2%, 85.0%) in the Kryxana plus letrozole arm and 71.8% (95% CI: 66.2%, 77.5%) in the placebo plus letrozole arm ( $p=0.018$ ) (see Table 11).

A series of pre-specified sub-group PFS analyses was performed based on prognostic factors and baseline characteristics to investigate the internal consistency of treatment effect. A reduction in the risk of disease progression or death in favor of the Kryxana plus letrozole arm was observed in all individual patient sub-groups of age, race, prior adjuvant or neo-adjuvant chemotherapy or hormonal therapies, liver and/or lung involvement and bone-only metastatic disease. This was evident for patients with liver and/or lung disease (HR: 0.561 [95% CI: 0.424, 0.743], median progression-free survival [mPFS] 24.8 months vs 13.4 months for the Kryxana and placebo arms, respectively the same) benefit was observed for those patients without liver and/or lung disease (HR: 0.597 [95% CI: 0.426, 0.837]; mPFS 27.6 months vs 18.2 months).



**Table 11** MONALEESA-2 (A2301) efficacy results (ORR, CBR) based on investigator assessment (29-Jan-16 cut-off)

Analysis	Kryxana plus letrozole (%, 95% CI)	Placebo plus letrozole (%, 95% CI)	p-value <sup>c</sup>
<b>Full analysis set</b>	N=334	N=334	
<b>Overall Response Rate<sup>a</sup></b>	40.7 (35.4, 46.0)	27.5 (22.8, 32.3)	0.000155
<b>Clinical Benefit Rate<sup>b</sup></b>	79.6 (75.3, 84.0)	72.8 (68.0, 77.5)	0.018
<b>Patients with measurable disease</b>	<b>N=256</b>	<b>N=245</b>	
<b>Overall Response Rate<sup>a</sup></b>	52.7 (46.6, 58.9)	37.1 (31.1, 43.2)	0.00028
<b>Clinical Benefit Rate<sup>b</sup></b>	80.1 (75.2, 85.0)	71.8 (66.2, 77.5)	0.020

<sup>a</sup>ORR: proportion of patients with complete response + partial response  
<sup>b</sup>CBR: proportion of patients with complete response + partial response + (stable disease or non-complete response/Non-progressive disease ≥24 weeks)  
<sup>c</sup> p-values are obtained from one sided Cochran-Mantel-Haenszel chi-square test.

**Final OS analysis**

At the time of the final overall survival (OS) analysis (10-Jun-2021 cut-off), the study met its key secondary endpoint demonstrating a statistically significant and clinically meaningful improvement in OS with a 23.5% relative reduction in risk of death (HR: 0.765, 95% CI: 0.628, 0.932; p-value=0.004).

OS benefit increased over time, with a 6-year survival rate of 44.2% (38.5, 49.8) for Kryxana vs. 32.0% (26.8, 37.3) for placebo. The median OS was 63.9 months (95% CI: 52.4, 71.0) for the Kryxana arm and 51.4 months (95% CI: 47.2, 59.7) for the placebo arm, with a 12.5-months improvement in median OS for the Kryxana arm. The exploratory OS results from subgroup analyses demonstrated that the OS benefit was generally consistent across the patient subgroups of prior adjuvant or neoadjuvant chemotherapy or hormonal therapies, liver and/or lung involvement, and bone-only metastatic disease (see Figure 6). This was evident for patients with liver and/or lung disease (HR: 0.806 [95% CI: 0.621, 1.045]; a similar benefit was observed for those patients without liver and/or lung disease (HR: 0.711 [95% CI: 0.526, 0.962]).

The OS results from this final analysis are summarized in Table 12 and the Kaplan-Meier curve is provided in Figure 2.

**Table 12** MONALEESA-2 (A2301) efficacy results (OS) (10-Jun-21 cut-off)

Overall survival, overall study population	Kryxana 600 mg + letrozole N=334	Placebo + letrozole N=334
Number of events – n [%]	181 (54.2)	219 (65.6)
Median OS [months] (95% CI)	63.9 (52.4, 71.0)	51.4 (47.2, 59.7)
Hazard ratio <sup>a</sup> (95% CI)	0.765 (0.628, 0.932)	

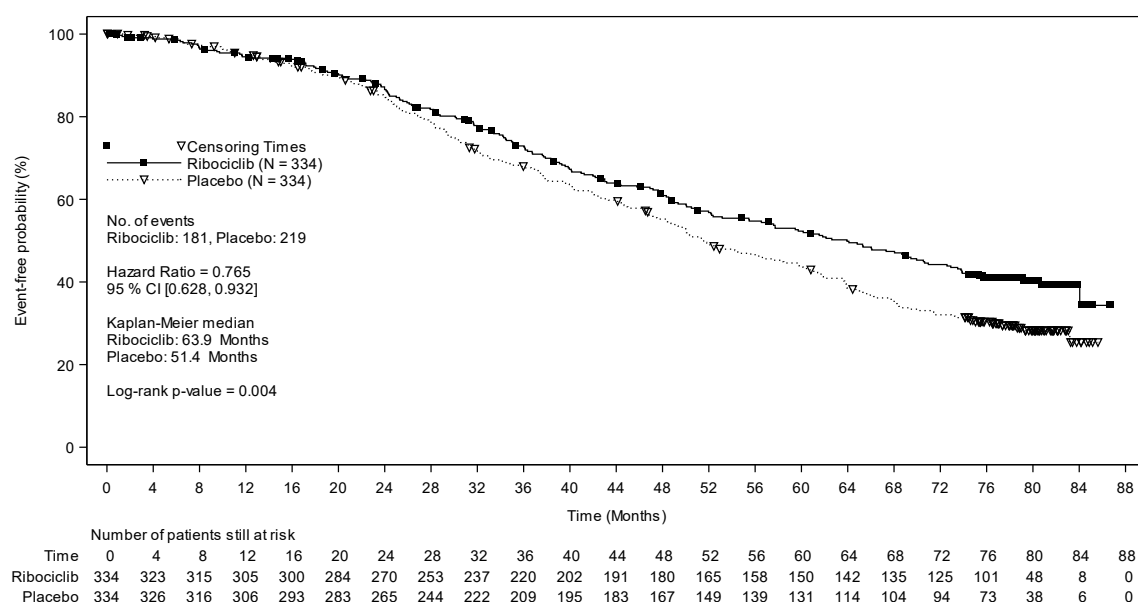
p-value <sup>b</sup>	0.004	
OS event-free rate, (%) (95% CI)		
24 months	86.6 (82.3, 89.9)	85.0 (80.5, 88.4)
60 months	52.3 (46.5, 57.7)	43.9 (38.3, 49.4)
72 months	44.2 (38.5, 49.8)	32.0 (26.8, 37.3)

CI=confidence interval;

<sup>a</sup>Hazard ratio is obtained from stratified Cox PH model;

<sup>b</sup>p-value is obtained from the one-sided log-rank test. Stratification performed by lung and/or liver metastases status as per IRT.

**Figure 2 MONALEESA-2 (A2301) Kaplan-Meier plot for OS (FAS) (data cut-off 10-Jun-2021)**



Log-rank test and Cox PH model are stratified by liver and/or lung metastasis as per IRT.

One sided P-value is obtained from stratified log rank test.

Additionally, the median time to first subsequent chemotherapy was prolonged by 11.7 months in the Kryxana arm compared to the placebo arm (50.6 months, 95% CI: 38.9, 60.0 months vs 38.9 months, 95% CI: 31.4, 45.4). The probability of chemotherapy usage was reduced by 25.8% in the Kryxana arm compared to the placebo arm (HR: 0.742; 95% CI: 0.606, 0.909).

### Study CLEE011E2301 (MONALEESA-7)

Kryxana was evaluated in a randomized, double-blind, placebo-controlled, multicenter phase III clinical study comparing ribociclib or placebo in combination with tamoxifen and goserelin or a non-steroidal aromatase inhibitor (NSAI) and goserelin for the treatment of pre- and perimenopausal women with hormone receptor (HR) positive, HER2-negative, advanced breast cancer.

A total of 672 patients were randomized to receive either Kryxana 600 mg plus tamoxifen or NSAI plus goserelin (n=335) or placebo plus tamoxifen or NSAI plus goserelin (n=337), stratified according to the presence of liver and/or lung metastases (Yes [n=344 (51.2%)] vs No [n=328 (48.8%)]), prior chemotherapy for advanced disease (Yes [n=120 (17.9%)] vs No [n=552 (82.1%)] and endocrine combination partner (NSAI and goserelin) [n=493 (73.4%)] versus tamoxifen and goserelin [n=179 (26.6%)]. Demographics and baseline disease characteristics were balanced and comparable between study arms.

Tamoxifen 20 mg or NSAI (letrozole 2.5 mg or anastrozole 1 mg) were given orally once daily on a continuous schedule, goserelin 3.6 mg was administered as sub-cutaneous injection on day 1 of each 28-day cycle, with either Kryxana 600 mg or placebo given orally once daily for 21 consecutive days followed by 7 days off until disease progression or unacceptable toxicity. Patients were not allowed to cross over from placebo to Kryxana during the study or after disease progression. Patients were not allowed to switch between endocrine combination partners.

Patients enrolled in the study had a median age of 44 years (range 25 to 58) and 27.7% of patients were younger than 40 years of age. The majority of patients were Caucasian (57.7%), Asian (29.5%), or Black (2.8%) and nearly all patients (99.0%) had an ECOG performance status of 0 or 1. Of the 672 patients, 32.6% of patients had received chemotherapy in the adjuvant vs 18.0% in neo-adjuvant setting and 39.6% had received endocrine therapy in the adjuvant vs 0.7% in the neoadjuvant setting. Prior to study entry 40.2% of patients had *de novo* metastatic disease, 23.7% had bone only disease, and 56.7% had visceral disease.

### Primary analysis

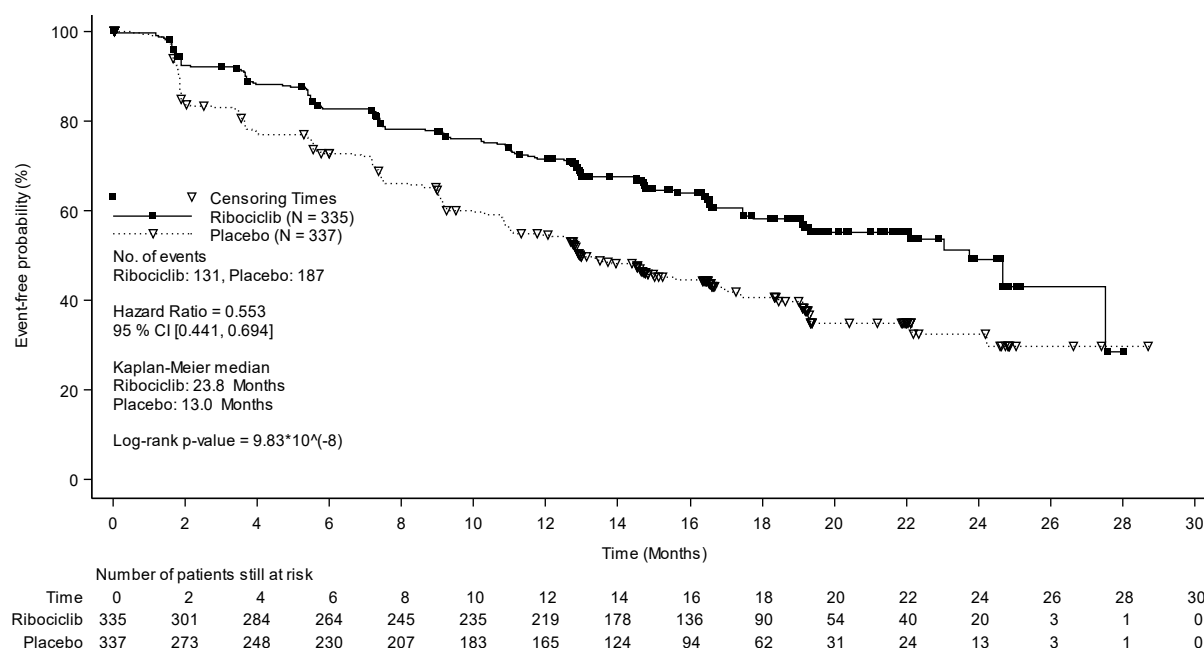
The primary endpoint for the study was met after observing 318 progression-free survival (PFS) events using RECIST v1.1, based on the investigator assessment in the full analysis set (all randomized patients) and confirmed by a blinded independent central radiological assessment of a randomly selected subset of approximately 40% of randomized patients (BIRC). The median follow-up time at the time of the primary PFS analysis was 19.2 months.

In the overall study population, the median PFS (95% CI) was 23.8 months (19.2, NE) in the Kryxana plus tamoxifen or NSAI arm and 13.0 months (11.0, 16.4) in the placebo plus tamoxifen or NSAI arm [HR: 0.553 (95% CI: 0.441, 0.694); one-sided stratified long-rank test p-value:  $9.83 \times 10^{-8}$ ]. Efficacy results are presented in the Kaplan-Meier curve for PFS in Figure 3. The results based on the BIRC were supportive of the primary efficacy results based on the investigator's assessment (HR: 0.427; 95% CI: 0.288, 0.633).

Overall response rate (ORR) per investigator assessment based on RECISTv1.1 was higher in the Kryxana arm (40.9%; 95% CI: 35.6, 46.2) compared to the placebo arm (29.7%; 95% CI: 24.8, 34.6; p=0.00098) (see Table 14).

The main pre-specified QoL measure was Time-To-Deterioration (TTD) in global health status. Definitive 10% deterioration was defined as a worsening in the EORTC QLQ-C30 global health scale score by at least 10% compared to baseline, with no later improvement above this threshold observed during the treatment period, or death due to any cause. Addition of Kryxana to tamoxifen or NSAI resulted in delaying time-to-deterioration in the EORTC QLQ-C30 global health scale score compared with placebo plus tamoxifen or NSAI (median not estimable versus 21.2 months; HR: 0.699 [95% CI: 0.533, 0.916]; p=0.004).

**Figure 3** MONALEESA-7 (E2301) Kaplan-Meier plot of PFS based on investigator assessment (FAS) (20-Aug-17 cut-off)



In the pre-specified sub-group analysis of 495 patients who had received Kryxana or placebo in combination with NSAI plus goserelin, the median PFS (95% CI) was 27.5 months (19.1, NE) in the Kryxana plus NSAI sub-group and 13.8 months (12.6, 17.4) in the placebo plus NSAI sub-group [HR: 0.569 (95% CI: 0.436, 0.743)]. Efficacy results are summarized in Table 15 and the Kaplan-Meier curves for PFS are provided in Figure 4.

Results, in the Kryxana plus NSAI subgroup were consistent across subgroups of age, race, prior adjuvant/ neo-adjuvant chemotherapy or hormonal therapies, liver and/or lung involvement and bone only metastatic disease.

In the NSAI sub-group, the median time to response (TTR) was not reached in either the Kryxana arm or the placebo arm and the probability of response by 6 months was 34.7% (95% CI: 29.0, 41.1) in the Kryxana arm and 23.7% (95% CI: 18.8, 29.6) in the placebo arm, indicating that a larger proportion of patients derived an earlier benefit in the Kryxana arm.

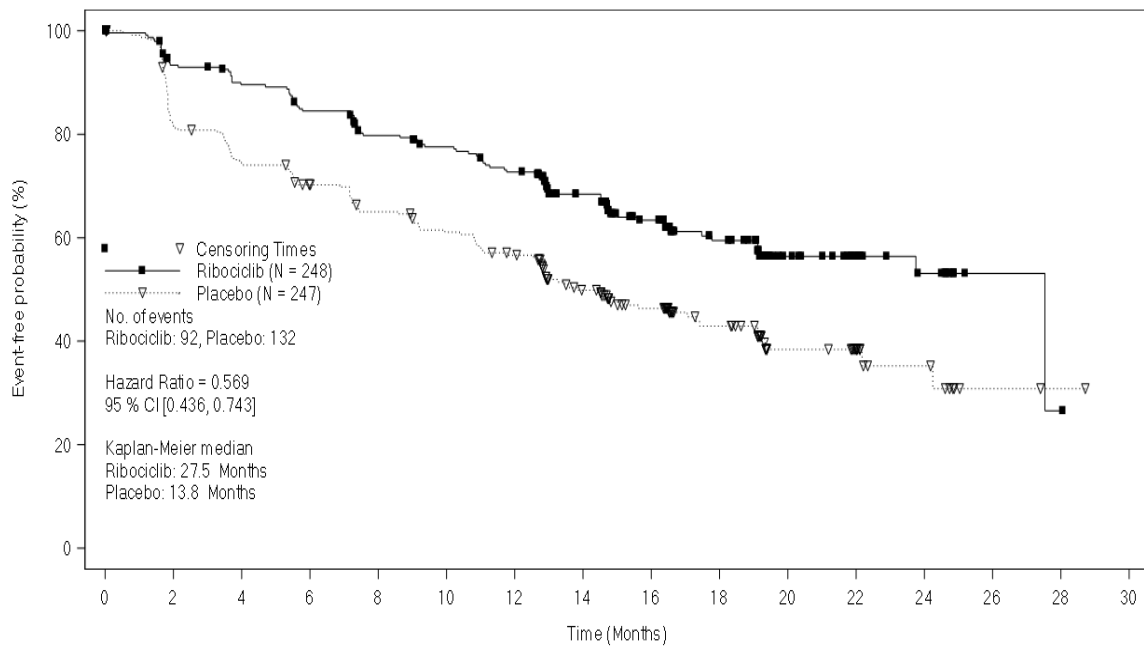
In the NSAI sub-group, the median duration of response (DOR) was not reached (95% CI: 18.3 months, NE) in the Kryxana arm and was 17.5 months (95% CI: 12.0, NE) in the placebo arm. Among patients with confirmed complete response or partial response, the probability of subsequent progression was 23.5% (95% CI: 15.6, 34.5) in the Kryxana arm and 36.4% (95% CI: 25.6, 49.8) in the placebo arm at 12 months.

**Table 13** MONALEESA-7 (E2301) primary efficacy results (PFS) based on investigator assessment in patients who received NSAI (20-Aug-17 cut-off)

	Kryxana plus NSAI plus goserelin N=248	Placebo plus NSAI plus goserelin N=247
<b>Progression free survival<sup>a</sup></b>		
Median PFS [months] (95% CI)	27.5 (19.1, NE)	13.8 (12.6, 17.4)
Hazard ratio (95% CI)	0.569 (0.436, 0.743)	

*CI=confidence interval; N=number of patients; NE = Not estimable.*  
*<sup>a</sup> – PFS based on investigator radiological assessment*

**Figure 4** MONALEESA-7 (E2301) Kaplan-Meier plot of PFS based on investigator assessment in patients who received NSAI (20-Aug-17 cut off)



	Number of patients still at risk															
Time	0	2	4	6	8	10	12	14	16	18	20	22	24	26	28	30
Ribociclib	248	223	212	199	183	175	163	132	100	66	38	27	15	2	1	0
Placebo	247	195	177	163	149	138	126	95	72	48	25	19	9	2	1	0

**Table 14** MONALEESA-7 (E2301) efficacy results (ORR, CBR) based on investigator assessment in patients who received NSAI (20-Aug-17 cut off)

Analysis	Kryxana plus NSAI plus goserelin (%, 95% CI)	Placebo plus NSAI plus goserelin (%, 95% CI)
<b>Full analysis set</b>	N=248	N=247
<b>Overall Response Rate<sup>a</sup></b>	39.1 (33.0, 45.2)	29.1 (23.5, 34.8)
<b>Clinical Benefit Rate<sup>b</sup></b>	80.2 (75.3, 85.2)	67.2 (61.4, 73.1)
<b>Patients with measurable disease</b>	<b>N=192</b>	<b>N=199</b>
<b>Overall Response Rate<sup>a</sup></b>	50.5 (43.4, 57.6)	36.2 (29.5, 42.9)
<b>Clinical Benefit Rate<sup>b</sup></b>	81.8 (76.3, 87.2)	63.8 (57.1, 70.5)

<sup>a</sup>ORR: proportion of patients with complete response + partial response  
<sup>b</sup>CBR: proportion of patients with complete response + partial response + (stable disease or non-complete response/non-progressive disease ≥24 weeks)

### Final OS Analysis

At the time of the second OS analysis (30-Nov-2018 cut-off), the study met its key secondary endpoint, demonstrating a statistically significant improvement in OS.

The demonstrated OS benefit was consistent across exploratory subgroups and the safety profile of both treatment arms remained consistent with the results from the primary analysis.

A more mature update of overall survival data (30-Nov-2018 cut-off) is provided in Table 15 as well as in Figures 5 and 6.

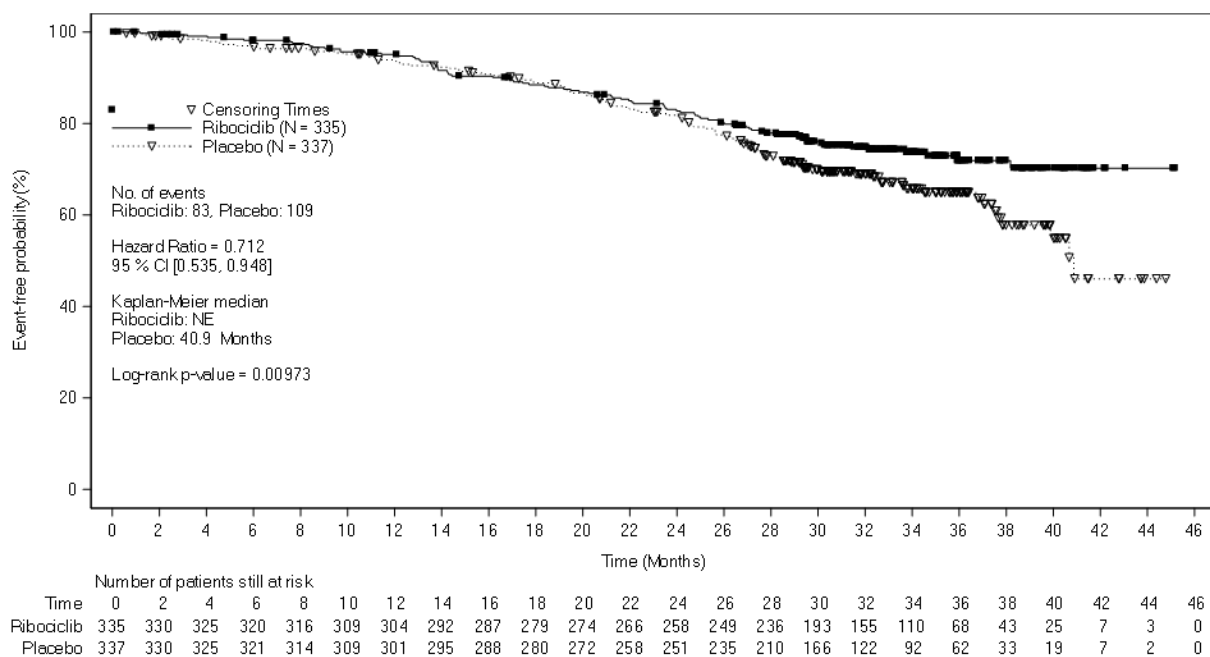
**Table 15 MONALEESA-7 (E2301) efficacy results (OS) (30-Nov-18 cut-off)**

Overall survival, overall study population	Ribociclib 600 mg N=335	Placebo N=337
Number of events – n [%]	83 (24.8)	109 (32.3)
Median OS [months] (95% CI)	NE (NE, NE)	40.9 (37.8, NE)
Hazard ratio (95% CI)	0.712 (0.535, 0.948)	
p-value <sup>a</sup>	0.00973	
Overall survival, NSAI subgroup	Ribociclib 600 mg N=248	Placebo N=247
Number of events – n [%]	61 (24.6)	80 (32.4)
Median OS [months] (95% CI)	NE (NE, NE)	40.7 (37.4, NE)
Hazard ratio (95% CI)	0.699 (0.501, 0.976)	

CI=confidence interval, NE=not estimable, N=number of patients, NSAI = non-steroidal aromatase inhibitor;

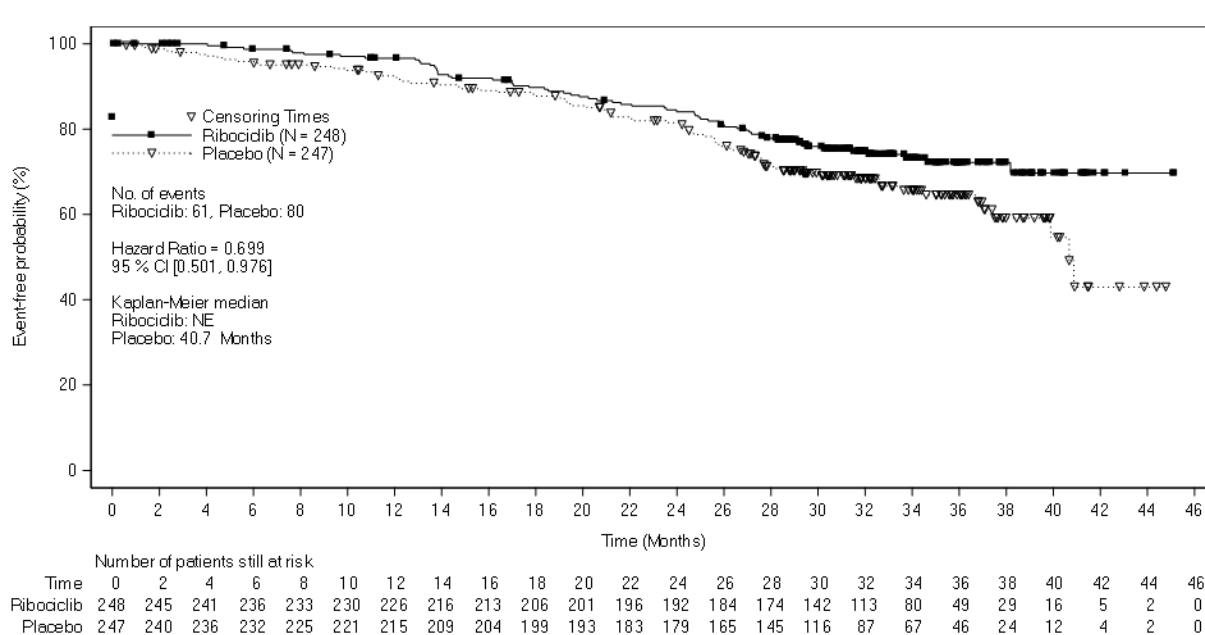
<sup>a</sup>p-value is obtained from the one-sided log-rank test stratified by lung and/or liver metastases, prior chemotherapy for advanced disease, and endocrine partner per IRT

**Figure 5 MONALEESA-7 (E2301) Kaplan Meier plot of OS (FAS) (30-Nov-18 cut-off)**



Log-rank test and Cox model are stratified by lung and/or liver metastasis, prior chemotherapy for advanced disease, and endocrine combination partner per IRT

**Figure 6 MONALEESA-7 (E2301) Kaplan Meier plot of OS in patients who received NSAI (30-Nov-18 cut-off)**



Hazard ratio is based on unstratified Cox model.

Additionally, time to progression on next-line therapy or death (PFS2) in patients in the Kryxana arm was longer compared to patients in the placebo arm (HR: 0.692 (95% CI: 0.548, 0.875)) in the overall study population. The median PFS2 was 32.3 months (95% CI: 27.6, 38.3) in the placebo arm and was not reached (95% CI: 39.4, NE) in the Kryxana arm. Similar results were observed in the NSAI sub-group (HR: 0.660 (95% CI: 0.503, 0.868); median PFS2: 32.3 months (95% CI: 26.9, 38.3) in the placebo arm vs not reached (95% CI: 39.4, NE) in the ribociclib arm).

### Study CLEE011F2301 (MONALEESA-3)

Kryxana was evaluated in a randomized double-blind, placebo-controlled study of ribociclib in combination with fulvestrant for the treatment of men and postmenopausal women with hormone receptor (HR) positive, HER2-negative advanced breast cancer who have received no or only one line of prior endocrine treatment.

A total of 726 patients were randomized in a 2:1 ratio to receive either Kryxana 600 mg and fulvestrant (n=484) or placebo and fulvestrant (n=242) stratified according to the presence of liver and/or lung metastases [Yes (n=351 (48.3%)) versus No (n=375 (51.7%))], prior endocrine therapy [A (n=354 (48.8%)) vs B (n=372 (51.2%))]. First-line patients with advanced breast cancer (A) include *de novo* advanced breast cancer with no prior endocrine therapy, and patients who relapsed after 12 months of (neo) adjuvant endocrine therapy completion.

Second-line patients' subgroup (B) includes those patients whose disease relapsed during adjuvant therapy or less than 12 months after endocrine adjuvant therapy completion, and those who progressed to first line endocrine therapy. Demographics and baseline disease characteristics were balanced and comparable between study arms. Kryxana 600 mg or placebo was given orally daily for 21 consecutive days followed by 7 days off treatment in combination with fulvestrant 500 mg administered intramuscularly on Cycle 1, Day 1, Cycle 1, Day 15, Cycle 2, Day 1 and every 28 days thereafter.



Patients enrolled in this study had a median age of 63 years (range 31 to 89). 46.7% of patients were aged 65 years and older, including 13.8% patients aged 75 years and older. The patients included were Caucasian (85.3%), Asian (8.7%) or Black (0.7%). Nearly all patients (99.7%) had an ECOG performance status of 0 or 1. First and second line patients were enrolled in this study (of whom 19.1 % of patients had *de novo* metastatic disease). 42.7% of patients had received chemotherapy in the adjuvant vs 13.1% in the neo-adjuvant setting and 58.5% had received endocrine therapy in the adjuvant vs 1.4% in the neoadjuvant setting. Prior to study entry 21.2% of patients had bone only disease and 60.5% of patients had visceral disease. Demographics and baseline disease characteristics were balanced and comparable between study arms.

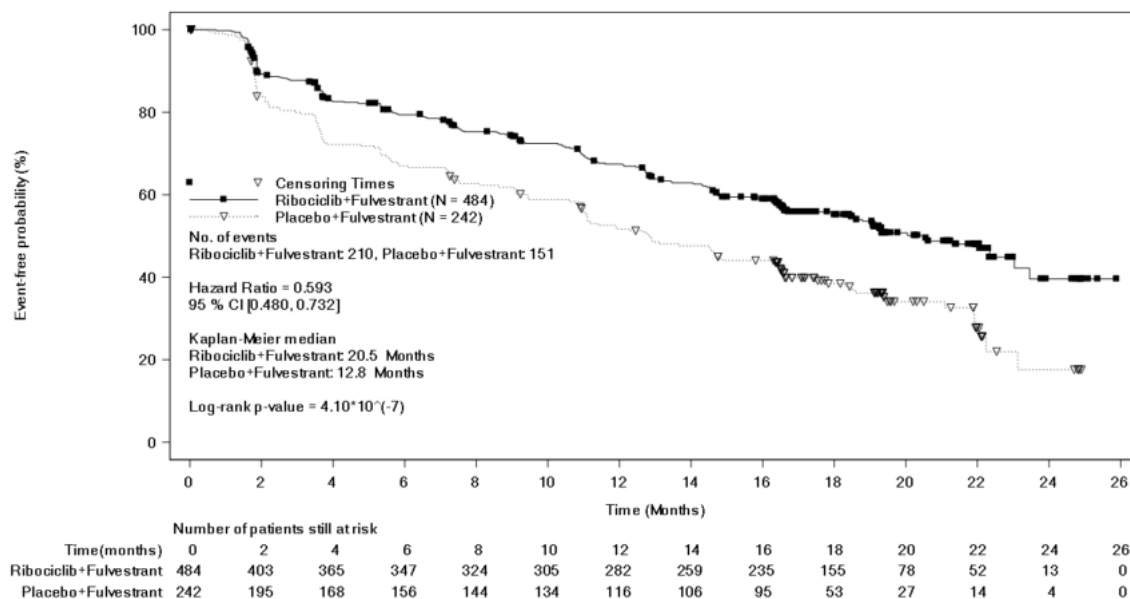
### Primary analysis

The primary endpoint for the study was performed after observing 361 PFS events using RECIST v1.1, based on the investigator assessment in the full analysis set (all randomized patients) and confirmed by a random central audit of 40% imaging subset by a blinded independent review committee (BIRC). The median follow-up time at the time of primary PFS analysis was 20.4 months.

PFS analyses based on the BIRC were supportive of the primary efficacy results, the PFS hazard ratio was 0.492 (95% CI, 0.345 to 0.703).

The primary efficacy results demonstrated a statistically significant improvement in PFS in patients receiving Kryxana plus fulvestrant compared to patients receiving placebo plus fulvestrant in the full analysis set (HR: 0.593; 95% CI: 0.480, 0.732; one sided stratified log-rank test p-value  $4.1 \times 10^{-7}$ ), with an estimated 41% reduction in relative risk of progression or death in favor of the Kryxana plus fulvestrant arm. The median (95% CI) PFS was 20.5 months (18.5, 23.5) in the Kryxana plus fulvestrant and 12.8 months (10.9, 16.3) in the placebo plus fulvestrant arm. Kaplan-Meier curve for PFS is provided in Figures 7 .

**Figure 7** MONALEESA-3 (F2301) Kaplan-Meier plot of PFS based on investigator assessment (FAS) (03-Nov-17 cut-off)



The clinical benefit rate in the Kryxana plus fulvestrant arm and in the placebo plus fulvestrant arm is summarized in Table 16.

**Table 16** MONALEESA-3 (F2301) efficacy results (ORR, CBR) based on investigator assessment (03-Nov-17 cut-off)

Analysis	Kryxana plus fulvestrant (%, 95% CI)	Placebo plus fulvestrant (%, 95% CI)	p-value
<b>Full analysis set</b>	N=484	N=242	
Overall Response Rate <sup>a</sup>	32.4 (28.3, 36.6)	21.5 (16.3, 26.7)	0.000912
Clinical Benefit Rate <sup>b</sup>	70.2 (66.2, 74.3)	62.8 (56.7, 68.9)	0.020
<b>Patients with measurable disease</b>	<b>N=379</b>	<b>N=181</b>	
Overall Response Rate <sup>a</sup>	40.9 (35.9, 45.8)	28.7 (22.1, 35.3)	0.003
Clinical Benefit Rate <sup>b</sup>	69.4 (64.8, 74.0)	59.7 (52.5, 66.8)	0.015

<sup>a</sup> ORR: proportion of patients with complete response + partial response

<sup>b</sup> CBR: proportion of patients with complete response + partial response + (stable disease or non-complete response/non-progressive disease ≥24 weeks)

The global health status/ QoL were similar between the Kryxana plus fulvestrant arm and the placebo plus fulvestrant arm. The main pre-specified QoL measure was TTD in global health status. A definitive 10% deterioration was defined as a worsening in score (EORTC QLQ-C30 global health scale score) by at least 10% compared to baseline, with no later improvement above this threshold observed during the treatment period, or death due to any cause. Addition of Kryxana to fulvestrant resulted in delaying TTD in the EORTC QLQ-C30 global health scale score compared with placebo plus fulvestrant, (median not estimable versus 19.4 months; HR: 0.795 [95% CI: 0.602,1.050]; p-value 0.051.

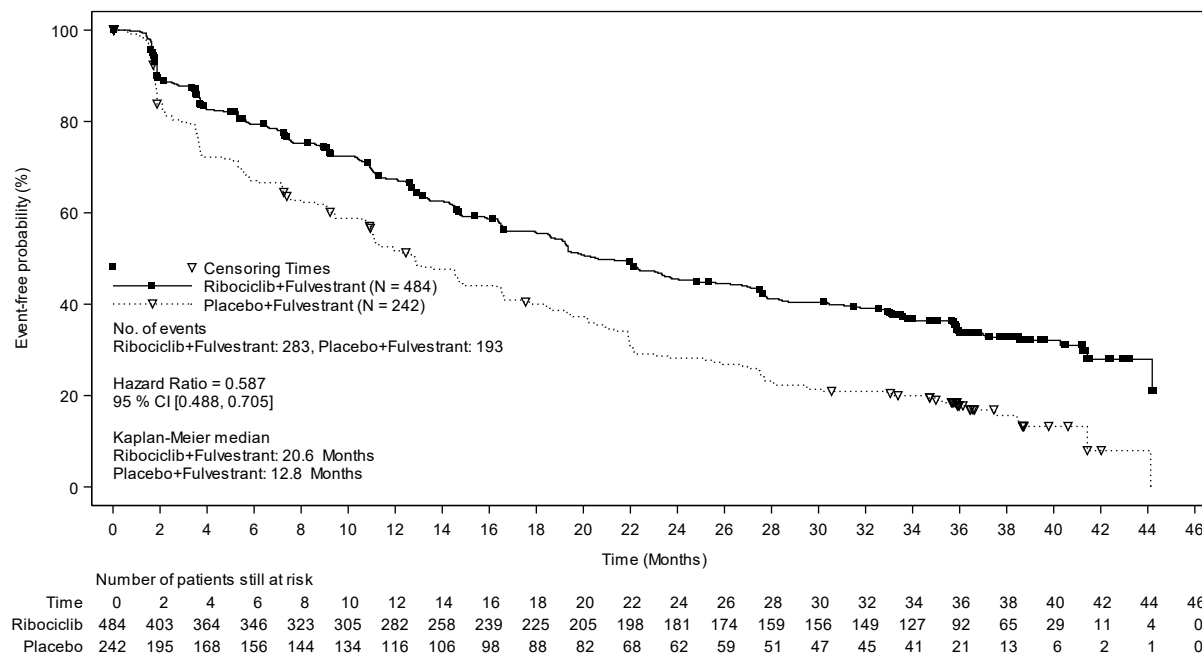
### Final OS Analysis

Since the median PFS for first line patients had not been reached at the time of the primary analysis, a descriptive update of primary efficacy results (PFS) was performed at the time of the second OS interim analysis, and the updated PFS results are summarized in Table 19 and the Kaplan-Meier curve is provided in Figure 8.

**Table 17** MONALEESA-3 (F2301) primary efficacy results (PFS) based on investigator assessment (03-Jun-19 cut-off)

	Kryxana plus fulvestrant N=484	Placebo plus fulvestrant N=242
<b>Progression-free survival</b>		
Median PFS [months] (95% CI)	20.6 (18.6, 24.0)	12.8 (10.9, 16.3)
Hazard ratio (95% CI)	0.587 (0.488, 0.705)	

**Figure 8** MONALEESA-3 (F2301) Kaplan-Meier plot of PFS based on investigator assessment (FAS) (03-Jun-19 cut-off)



Results were consistent across pre-specified sub-groups of age, prior adjuvant or neo-adjuvant chemotherapy or hormonal therapies, liver and/or lung involvement, and bone only metastatic disease. The subgroup analysis based on prior endocrine therapy is presented in Table 18.

**Table 18** MONALEESA-3 (F2301) efficacy results (PFS) for prior endocrine therapy subgroup (03-Jun-19 cut-off)

	Updated analysis PFS subgroup for prior endocrine therapy (3 Jun 19 cut-off)	
First-line setting	Ribociclib 600 mg N=237	Placebo N=128
Number of events – n [%]	112 (47.3)	95 (74.2)
Median PFS [months] (95% CI)	33.6 (27.1, 41.3)	19.2 (14.9, 23.6)
Hazard ratio (95% CI)	0.546 (0.415, 0.718)	
Second-line setting or with an early relapse	Ribociclib 600 mg N=237	Placebo N=109
Number of events – n [%]	167 (70.5)	95 (87.2)
Median PFS [months] (95% CI)	14.6 (12.5, 18.6)	9.1 (5.8, 11.0)
Hazard ratio (95% CI)	0.571 (0.443, 0.737)	

CI=confidence interval

First-line setting = newly diagnosed (de novo) advanced breast cancer or relapse after 12 months from completion of (neo)adjuvant endocrine therapy with no treatment for advanced or metastatic disease

Second-line setting or with an early relapse = relapse on or within 12 months from completion of (neo)adjuvant endocrine therapy with no treatment for advanced or metastatic disease (early relapse), relapse after 12 months from completion of (neo)adjuvant therapy with subsequent progression after one line of endocrine therapy for advanced or metastatic disease, or advanced or metastatic breast cancer at diagnosis that progressed after one line of endocrine therapy for advanced disease with no prior (neo)adjuvant treatment for early disease

In the pre-specified second OS interim analysis, the study crossed pre-specified Lan-DeMets (O'Brien-Fleming) stopping boundary, demonstrating a statistically significant improvement in OS.

The OS results from this interim analysis with a 03-Jun-19 cut-off are provided in Table 19 and Figure 9.

**Table 19 MONALEESA-3 (F2301) efficacy results (OS) (03-Jun-19 cut-off)**

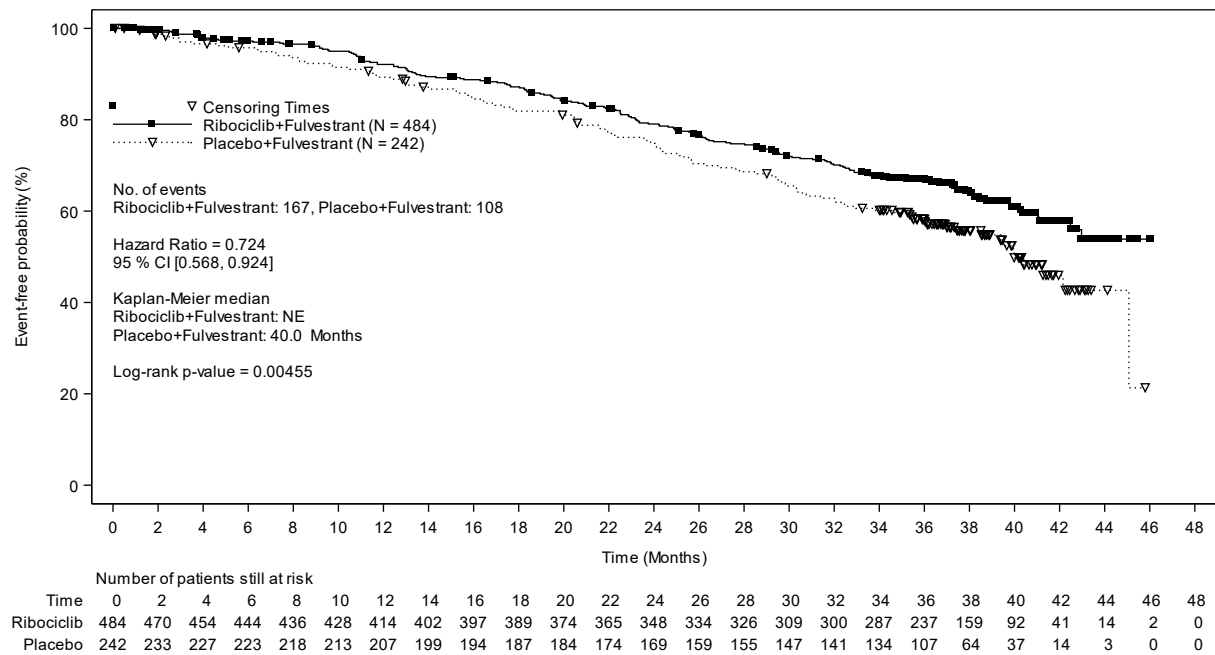
	Kryxana 600 mg	Placebo
Overall study population	N=484	N=242
Number of events - n [%]	167 (34.5)	108 (44.6)
Median OS [months] (95% CI)	NE, (NE, NE)	40 (37, NE)
HR (95% CI)	0.724 (0.568, 0.924)	
p value	0.00455	

- [1] One-sided P-value is obtained from log-rank test stratified by lung and/or liver metastasis, previous endocrine therapy per IRT. P-value is one-sided and is compared against a threshold of 0.01129 as determined by the Lan-DeMets (O'Brien-Fleming) alpha-spending function for an overall significance level of 0.025.

- [2] Hazard ratio is obtained from the Cox PH model stratified by lung and/or liver metastasis, previous endocrine therapy per IRT.

NE = Not estimable

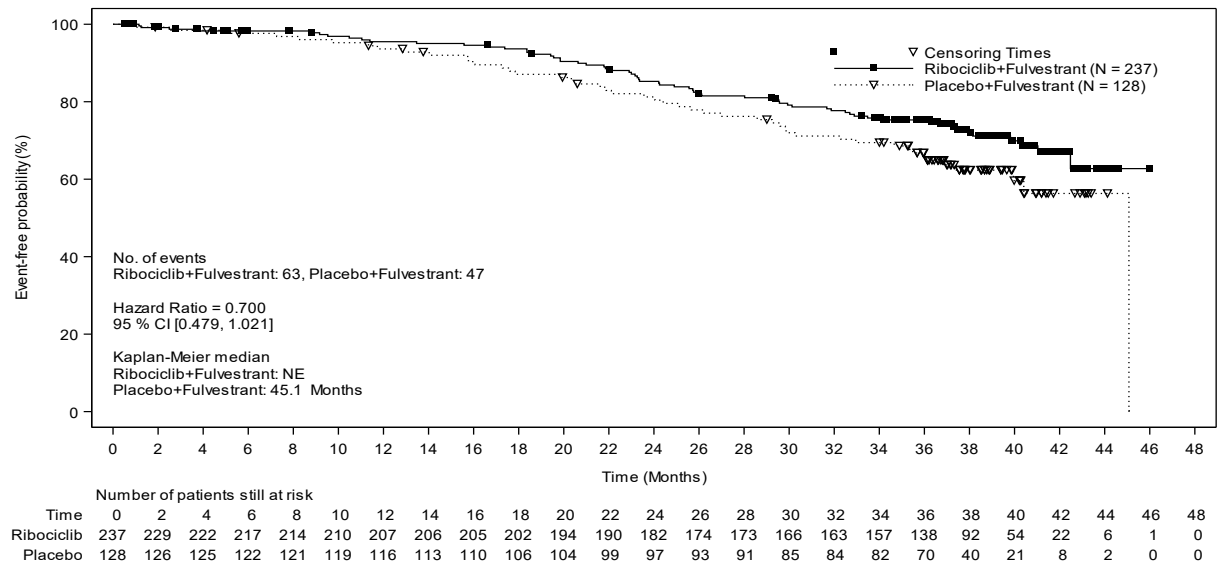
**Figure 9 MONALEESA-3 (F2301) Kaplan Meier plot of OS (FAS) (03-Jun-19 cut-off)**



Log-rank test and Cox model are stratified by lung and/or liver metastasis, prior chemotherapy for advanced disease, and endocrine combination partner per IRT

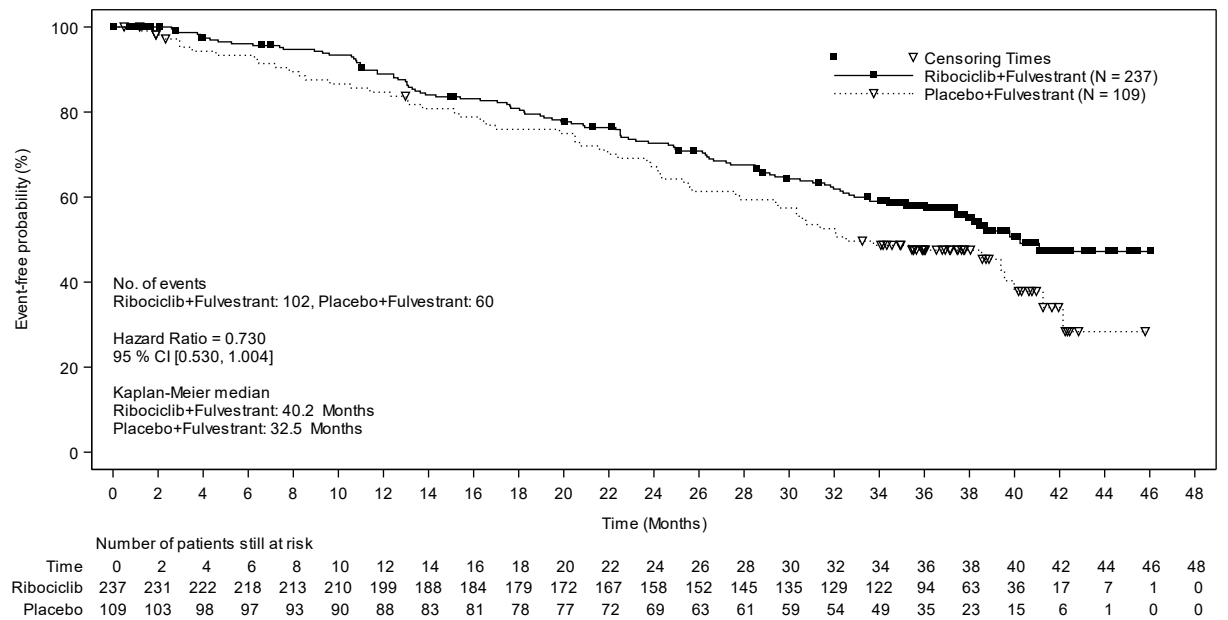
OS results for subgroups analyses are presented in Figures 10 and 11.

**Figure 10** MONALEESA-3 (F2301) Kaplan Meier plot of OS treatment naïve patients in the metastatic/advanced disease setting (FAS) (03-Jun-19 cut-off)



Hazard ratio is based on unstratified Cox model

**Figure 11** MONALEESA-3 (F2301) Kaplan Meier plot of OS in patients who received up to 1 line of treatment for metastatic/advanced disease setting (FAS) (03-Jun-19 cut-off)



Hazard ratio is based on unstratified Cox model

Additionally, time to progression on next-line therapy or death (PFS2) in patients in the Kryxana arm was longer compared to patients in the placebo arm (HR: 0.670 (95% CI: 0.542, 0.830)) in the overall study population. The median PFS2 was 39.8 months (95% CI: 32.5, NE) for the Kryxana arm and 29.4 months (95% CI: 24.1, 33.1) in the placebo arm.

### Study CLEE011A2404 (COMPLEEMENT-1)

Kryxana was evaluated in an open-label, single arm, multicenter phase IIIb clinical study comparing ribociclib in combination with letrozole in pre/post-menopausal women and men with HR-positive, HER2-negative, advanced breast cancer who received no prior hormonal therapy for advanced disease. Premenopausal women, and men, also received goserelin or leuprolide.

The study enrolled 3246 patients, including 39 male patients who received Kryxana 600 mg orally once daily for 21 consecutive days followed by 7 days off; and letrozole 2.5 mg orally once daily for 28 days; and goserelin 3.6 mg as injectable subcutaneous implant or leuprolide 7.5 mg as intramuscular injection administered on Day 1 of each 28-day cycle. Patients were treated until disease progression or unacceptable toxicity occurred.

Male patients enrolled in this study had a median age of 62 years (range 33 to 80). Of these patients, 38.5% were 65 years and older, including 10.3% aged 75 years and older. The male patients enrolled were Caucasian (71.8%), Asian (7.7%), and Black (2.6%), with 17.9% unknown. Nearly all male patients (97.4%) had an ECOG performance status of 0 or 1. The majority of male patients (97%) had 4 or less metastatic sites, which were primarily bone and visceral (69.2% each).

Table 20 summarizes the efficacy results in male patients.

**Table 20**      **COMPLEEMENT-1 (A2402) efficacy results in male patients<sup>1</sup> based on investigator assessment (intent-to-treat population)**

	Kryxana + Letrozole + Goserelin or Leuprolide
<b>Overall Response Rate<sup>*,2</sup></b>	N = 32
(95% CI)	46.9 (29.1, 65.3)
<b>Duration of Response<sup>3</sup></b>	N = 15
Median (months, 95% CI)	NR (21.3, NR)
Patients with DoR ≥ 12 months, n (%)	12 (80.0%)
<b>Clinical Benefit Rate<sup>4</sup></b>	
(95% CI)	71.9 (53.3, 86.3)

Abbreviations: CI, confidence interval, NR, not reached.

<sup>\*</sup>Based on confirmed responses.

<sup>1</sup>Patients with measurable disease; 7 patients did not have measurable disease.

<sup>2</sup>Investigator Assessment.

<sup>3</sup>Proportion of patients with complete response or partial response.

<sup>4</sup>Proportion of patients with complete response + partial response + (stable disease or non-complete response/non-progressive disease ≥24 weeks)

## NON-CLINICAL SAFETY DATA

Ribociclib was evaluated in safety pharmacology, repeated dose toxicity, genotoxicity, reproductive toxicity, and phototoxicity studies.

### Safety pharmacology

Ribociclib did not have effects on CNS or respiratory functions. *In vivo* cardiac safety studies in dogs demonstrated dose and concentration related QTc interval prolongation at an exposure that would be expected to be achieved in patients following the recommended dose of 600 mg. As well, there is potential to induce incidences of PVCs at elevated exposures (approximately 5-fold the anticipated clinical  $C_{max}$ ).

### **Repeated dose toxicity**

Repeated dose toxicity studies (treatment schedule of 3 weeks on/1 week off) in rats up to 27 weeks duration and dogs up to 39 weeks duration, revealed the hepatobiliary system (proliferative changes, cholestasis, sand-like gallbladder calculi, and inspissated bile) as the primary target organ of toxicity of ribociclib. Target organs associated with the pharmacological action of ribociclib in repeat dose studies include bone marrow (hypocellularity), lymphoid system (lymphoid depletion), intestinal mucosa (atrophy), skin (atrophy), bone (decreased bone formation), kidney (concurrent degeneration and regeneration of tubular epithelial cells) and testes (atrophy). Besides the atrophic changes seen in the testes, which showed a trend towards reversibility, all other changes were fully reversible after a 4-week treatment free period. These effects can be linked to a direct anti-proliferative effect on the testicular germ cells resulting in atrophy of the seminiferous tubules. Exposure to ribociclib in animals in the toxicity studies was generally less than or equal to that observed in patients receiving multiple doses of 600 mg/day (based on AUC).

### **Reproductive toxicity/Fertility**

See section PREGNANCY, LACTATION, FEMALES AND MALES OF REPRODUCTIVE POTENTIAL.

### **Genotoxicity**

Genotoxicity studies in bacterial *in vitro* systems and in mammalian *in vitro* and *in vivo* systems with and without metabolic activation did not reveal any evidence for a mutagenic potential of ribociclib.

### **Phototoxicity**

Ribociclib was shown to absorb light in the UV-B and UV-A range. An *in vitro* phototoxicity test did not identify a relevant phototoxicity potential for ribociclib. The risk that ribociclib causes photosensitization in patients is considered very low.

### **Carcinogenesis**

Ribociclib was assessed for carcinogenicity in a 2-year rat study.

Oral administration of ribociclib for 2 years resulted in an increased incidence of endometrial epithelial tumors and glandular and squamous hyperplasia in the uterus/cervix of female rats at doses  $\geq 300$  mg/kg/day as well as an increased incidence in follicular tumors in the thyroid glands of male rats at a dose of 50 mg/kg/day. Mean exposure at steady state ( $AUC_{0-24h}$ ) in female and male rats in whom neoplastic changes were seen was 1.2 and 1.4-fold that achieved in patients at the recommended dose of 600 mg/day, respectively. Mean exposure at steady state ( $AUC_{0-24h}$ ) in female and male rats in whom neoplastic changes were seen was 2.2 and 2.5-fold that achieved in patients at a dose of 400 mg/day, respectively.

Additional non-neoplastic proliferative changes consisted of increased liver altered foci (basophilic and clear cell) and testicular interstitial (Leydig) cell hyperplasia in male rats at doses of  $\geq 5$  mg/kg/day and 50 mg/kg/day, respectively.

The mechanism for the thyroid findings in males is considered to be a rodent-specific microsomal enzyme induction in the liver with no relevance to humans. The effects on the uterus/cervix and on the testicular interstitial (Leydig) cell are related to prolonged hypoprolactinemia secondary to CDK4 inhibition of lactotrophic cell function in the pituitary gland, altering the hypothalamus-pituitary-gonadal axis. Any potential increase of estrogen/progesterone ratio in humans by this mechanism would be compensated by an inhibitory action of concomitant anti-estrogen therapy on estrogen synthesis as in humans Kryxana is indicated in combination with estrogen-lowering agents.

Considering important differences between rodents and humans with regard to synthesis and role of prolactin, this mode of action is not expected to have consequences in humans.

## **INCOMPATIBILITIES**

Not applicable.

## **STORAGE**

See folding box.

KRYXANA should not be used after the date marked “EXP” on the pack.

KRYXANA must be kept out of the sight and reach of children.

## **INSTRUCTIONS FOR USE AND HANDLING**

N/A.

### **Manufacturer:**

See folding box.

**International Package Leaflet:** IPL#10-CDSv3.0-20230327

Information issued: APR 2023

® = registered trademark

**Novartis Pharma AG, Basel, Switzerland**